



# **Micro Focus Security ArcSight Connectors**

## **SmartConnector for PureSight Content Filter DB**

### **Configuration Guide**

**December 9, 2019**

## **Configuration Guide**

### **SmartConnector for PureSight Content Filter DB**

**December 9, 2019**

**Copyright © 2006 – 2017; 2019 Micro Focus or one of its affiliates.**

## **Legal Notices**

### **Micro Focus**

#### **The Lawn**

**22-30 Old Bath Road**

**Newbury, Berkshire RG14 1QN**

**UK**

<https://www.microfocus.com>.

**Confidential computer software. Valid license from Micro Focus required for possession, use or copying. The information contained herein is subject to change without notice.**

**The only warranties for Micro Focus products and services are set forth in the express warranty statements accompanying such products and services. Nothing herein should be construed as constituting an additional warranty. Micro Focus shall not be liable for technical or editorial errors or omissions contained herein.**

**No portion of this product's documentation may be reproduced or transmitted in any form or by any means, electronic or mechanical, including photocopying, recording, or information storage and retrieval systems, for any purpose other than the purchaser's internal use, without the express written permission of Micro Focus.**

**Notwithstanding anything to the contrary in your license agreement for Micro Focus ArcSight software, you may reverse engineer and modify certain open source components of the software in accordance with the license terms for those particular components. See below for the applicable terms.**

**U.S. Governmental Rights. For purposes of your license to Micro Focus ArcSight software, "commercial computer software" is defined at FAR 2.101. If acquired by or on behalf of a civilian agency, the U.S. Government acquires this commercial computer software and/or commercial computer software documentation and other technical data subject to the terms of the Agreement as specified in 48 C.F.R. 12.212 (Computer Software) and 12.211 (Technical Data) of the Federal Acquisition Regulation ("FAR") and its successors. If acquired by or on behalf of any agency within the Department of Defense ("DOD"), the U.S. Government acquires this commercial computer software and/or commercial computer software documentation subject to the terms of the Agreement as specified in 48 C.F.R. 227.7202- 3 of the DOD FAR Supplement ("DFARS") and its successors. This U.S. Government Rights Section 18.11 is in lieu of, and supersedes, any other FAR, DFARS, or other clause or provision that addresses government rights in computer software or technical data.**

---

## Trademark Notices

**Adobe™ is a trademark of Adobe Systems Incorporated.**

**Microsoft® and Windows® are U.S. registered trademarks of Microsoft Corporation.**

**UNIX® is a registered trademark of The Open Group.**

## Documentation Updates

**The title page of this document contains the following identifying information:**

- \* Software Version number**
- \* Document Release Date, which changes each time the document is updated**
- \* Software Release Date, which indicates the release date of this version of the software**

**To check for recent updates or to verify that you are using the most recent edition of a document, go to:**

**<https://community.microfocus.com/t5/ArcSight-Product-Documentation/ct-p/productdocs>**

## Revision History

Date	Description
12/09/2019	Updated DB2 JDBC driver information.
10/17/2017	Added encryption parameters to Global Parameters.
11/30/2016	Updated installation procedure for setting preferred IP address mode.
06/30/2016	Updated MySQL JDBC driver information.
05/16/2016	Updated link for MySQL JDBC driver.
05/15/2012	Added new installation procedure.
02/15/2012	Added driver download information for Connector Appliance.
08/15/2011	Added information about downloading the MySQL driver.
02/11/2010	Added support for FIPS Suite B and CEF File transport.

## SmartConnector for PureSight Content Filter DB

---

This guide provides information for installing the SmartConnector for PureSight Content Filter DB and configuring the device for database event log collection. PureSight Content Filter Version 4.6 is supported.

### Product Overview

PureSight combines Internet filtering capabilities with powerful management tools to offer an Internet content-filtering solution. PureSight is based upon proprietary Artificial Content Recognition (ACR) technology. PureSight allows Internet usage policies to be defined, implemented, and modified.

### Configuration

Because MySQL supports host-based access control, you may find it necessary to configure MySQL to allow connections from the host where the ArcSight PureSight SmartAgent is running. To allow MySQL access, execute the following command in a MySQL prompt:

```
GRANT SELECT ON PureSightdb.* to MySQLuser@'agenthost'  
identified by 'MySQLpassword';
```

where the parameters are defined as follows:

Parameter	Description
PureSightdb	The name of the database used by PureSight
MySQLuser	The user that you created for the ArcSight SmartConnector to access the MySQL database
AgentHost	The host name (or IP address) of the host running the ArcSight SmartConnector (for testing puposes, you could use %, which means 'any host')
MySQLPassword	The password of the user you created for the ArcSight SmartConnector

### Install the SmartConnector

The following sections provide instructions for installing and configuring your selected SmartConnector.

#### Prepare to Install Connector

Before you install any SmartConnectors, make sure that the ArcSight products with which the connectors will communicate have already been installed correctly (such as ArcSight ESM or ArcSight Logger).

For complete product information, read the *Administrator's Guide* as well as the *Installation and Configuration* guide for your ArcSight product before installing a new SmartConnector. If you are adding a connector to the ArcSight Management Center, see the *ArcSight Management Center Administrator's Guide* for instructions, and start the installation procedure at "Set Global Parameters (optional)" or "Select Connector and Add Parameter Information."

Before installing the SmartConnector, be sure the following are available:

- Local access to the machine where the SmartConnector is to be installed
- Administrator passwords

## Install Core Software

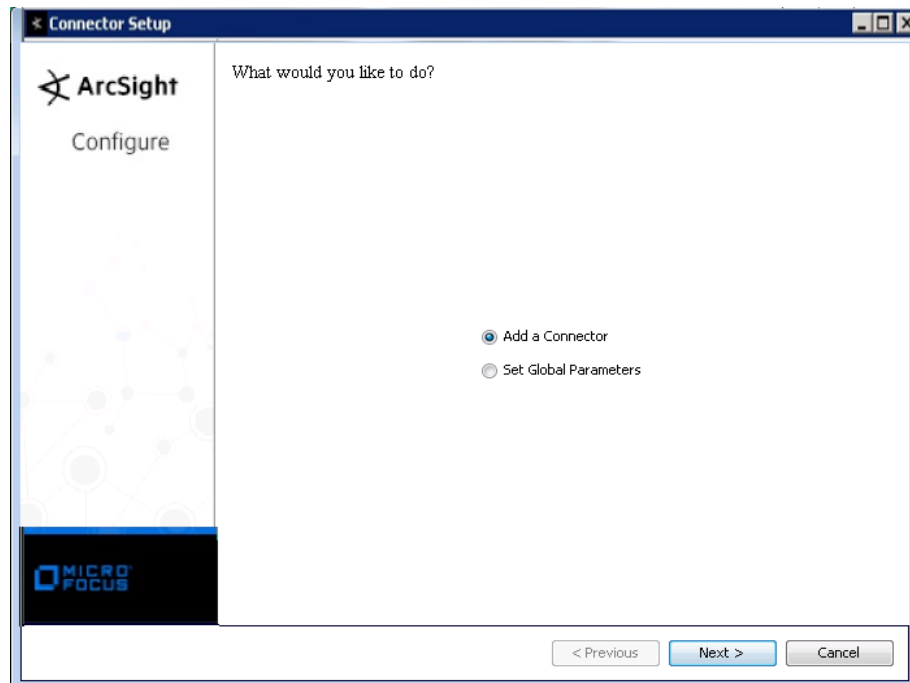
Unless specified otherwise at the beginning of this guide, this SmartConnector can be installed on all ArcSight supported platforms; for the complete list, see the *SmartConnector Product and Platform Support* document, available from the Micro Focus SSO and Protect 724 sites.

- 1 Download the SmartConnector executable for your operating system from the Micro Focus SSO site.
- 2 Start the SmartConnector installation and configuration wizard by running the executable.

Follow the wizard through the following folder selection tasks and installation of the core connector software:

Introduction  
Choose Install Folder  
Choose Shortcut Folder  
Pre-Installation Summary  
Installing...

- 3 When the installation of SmartConnector core component software is finished, the following window is displayed:



## Download MySQL JDBC Driver

- 1 **Click Cancel to leave the configuration wizard at this point.**
- 2 **The following steps are required when you use the MySQL JDBC driver, required for Connector Appliance/ArcSight Management Center and Linux systems.**
  - A **For connector versions 7.2.4 and later, download the latest MySQL JDBC Driver from:**  
<http://dev.mysql.com/downloads/connector/j>  
  
**For connector versions 7.2.3 and earlier, download the MySQL 5.0.8 JDBC Driver from:**  
<https://dev.mysql.com/downloads/connector/j/5.0.html>  
  
**For connector versions 7.14.0 and later, download the latest DB2 JDBC Driver from:**  
<https://www.ibm.com/support/pages/db2-jdbc-driver-versions-and-downloads>  
  
**Install the driver.**
  - B **For software connectors, copy the appropriate jar file to `$ARCSIGHT_HOME\current\user\agent\lib`, where `$ARCSIGHT_HOME` refers to the connector install folder, such as `c:\ArcSight\SmartConnectors`. For Connector Appliance/ArcSight Management Center users, see "Add a JDBC Driver to the Connector Appliance/ArcSight Management Center" later in this guide.**
  - C **From `$ARCSIGHT_HOME/current/bin`, double-click `runagentsetup` to return to the SmartConnector Configuration Wizard.**

## Set Global Parameters (optional)

If you choose to perform any of the operations shown in the following table, do so before adding your connector. You can set the following parameters:

Parameter	Setting
FIPS mode	Select 'Enabled' to enable FIPS compliant mode. To enable FIPS Suite B Mode, see the SmartConnector User Guide under "Modifying Connector Parameters" for instructions. Initially, this value is set to 'Disabled'.
Remote Management	Select 'Enabled' to enable remote management from ArcSight Management Center. When queried by the remote management device, the values you specify here for enabling remote management and the port number will be used. Initially, this value is set to 'Disabled'.
Remote Management Listener Port	The remote management device will listen to the port specified in this field. The default port number is 9001.
Preferred IP Version	When both IPv4 and IPv6 IP addresses are available for the local host (the machine on which the connector is installed), you can choose which version is preferred. Otherwise, you will see only one selection. The initial setting is IPv4.

The following parameters should be configured only if you are using Micro Focus SecureData solutions to provide encryption. See the *Micro Focus SecureData Architecture Guide* for more information.

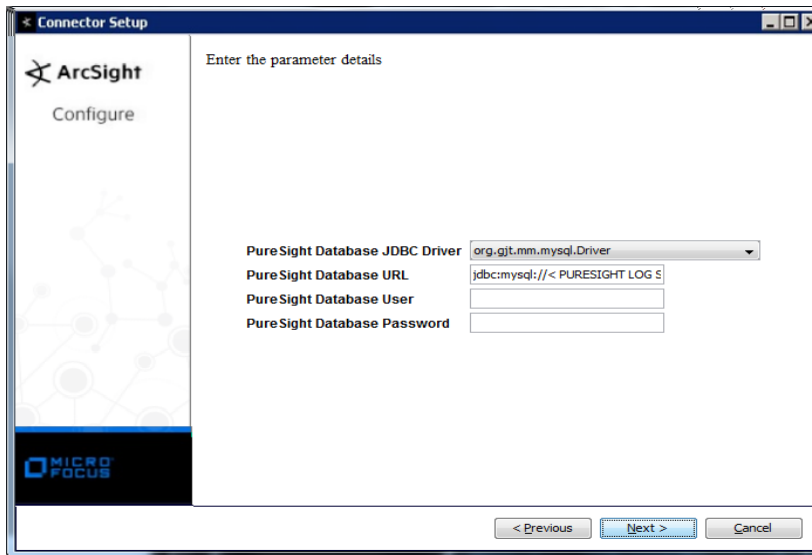
Parameter	Setting
Format Preserving Encryption	Data leaving the connector machine to a specified destination can be encrypted by selecting 'Enabled' to encrypt the fields identified in 'Event Fields to Encrypt' before forwarding events. If encryption is enabled, it cannot be disabled. Changing any of the encryption parameters again will require a fresh installation of the connector.
Format Preserving Policy URL	Enter the URL where the Micro Focus SecureData Server is installed.
Proxy Server (https)	Enter the proxy host for https connection if any proxy is enabled for this machine.
Proxy Port	Enter the proxy port for https connection if any proxy is enabled for this machine.
Format Preserving Identity	The Micro Focus SecureData client software allows client applications to protect and access data based on key names. This key name is referred to as the identity. Enter the user identity configured for Micro Focus SecureData.
Format Preserving Secret	Enter the secret configured for Micro Focus SecureData to use for encryption.
Event Fields to Encrypt	Recommended fields for encryption are listed; delete any fields you do not want encrypted and add any string or numeric fields you want encrypted. Encrypting more fields can affect performance, with 20 fields being the maximum recommended. Also, because encryption changes the value, rules or categorization could also be affected. Once encryption is enabled, the list of event fields cannot be edited.

After making your selections, click Next. A summary screen is displayed. Review the summary of your selections and click Next. Click Continue to return to proceed with "Add a Connector" window. Continue the installation procedure with "Select Connector and Add Parameter Information."

## Select Connector and Add Parameter Information

- 1 Select Add a Connector and click Next. If applicable, you can enable FIPS mode and enable remote management later in the wizard after SmartConnector configuration.

- 2 **Select PureSight Content-Filter DB and click Next.**
- 3 **Enter the required SmartConnector parameters to configure the SmartConnector, then click Next.**



Parameter	Description
PureSight Database JDBC Driver	Database JDBC Driver.
PureSight Database URL	Database JDBC URL. Accept the default value jdbc:odbc:<DSN Name>, where <DSN Name> is the name of the ODBC connection to PureSight.
PureSight Database User	Database Username.
PureSight Database Password	Database password.

## Select a Destination

- 1 **The next window asks for the destination type; select a destination and click Next. For information about the destinations listed, see the *ArcSight SmartConnector User Guide*.**
- 2 **Enter values for the destination. For the ArcSight Manager destination, the values you enter for User and Password should be the same ArcSight user name and password you created during the ArcSight Manager installation. Click Next.**
- 3 **Enter a name for the SmartConnector and provide other information identifying the connector's use in your environment. Click Next. The connector starts the registration process.**
- 4 **If you have selected ArcSight Manager as the destination, the certificate import window for the ArcSight Manager is displayed. Select Import the certificate to the connector from destination and click Next. (If you select Do not import the certificate to connector from**



destination, the connector installation will end.) The certificate is imported and the Add connector Summary window is displayed.

## Complete Installation and Configuration

- 1 Review the Add Connector Summary and click Next. If the summary is incorrect, click Previous to make changes.
- 2 The wizard now prompts you to choose whether you want to run the SmartConnector as a stand-alone process or as a service. If you choose to run the connector as a stand-alone process, select Leave as a standalone application, click Next, and continue with step 5.
- 3 If you chose to run the connector as a service, with Install as a service selected, click Next. The wizard prompts you to define service parameters. Enter values for Service Internal Name and Service Display Name and select Yes or No for Start the service automatically. The Install Service Summary window is displayed when you click Next.
- 4 Click Next on the summary window.
- 5 To complete the installation, choose Exit and Click Next.

For instructions about upgrading the connector or modifying parameters, see the *SmartConnector User Guide*.

## Run the SmartConnector

SmartConnectors can be installed and run in stand-alone mode, on Windows platforms as a Windows service, or on UNIX platforms as a UNIX daemon, depending upon the platform supported. On Windows platforms, SmartConnectors also can be run using shortcuts and optional Start menu entries.

If the connector is installed in stand-alone mode, it must be started manually and is not automatically active when a host is restarted. If installed as a service or daemon, the connector runs automatically when the host is restarted. For information about connectors running as services or daemons, see the *ArcSight SmartConnector User Guide*.

To run all SmartConnectors installed in stand-alone mode on a particular host, open a command window, go to `$ARCSIGHT_HOME\current\bin` and run: `arcsight connectors`

To view the SmartConnector log, read the file `$ARCSIGHT_HOME\current\logs\agent.log`; to stop all SmartConnectors, enter `Ctrl+C` in the command window.

## Device Event Mapping to ArcSight Fields

The following section lists the mappings of ArcSight data fields to the device's specific event definitions. See the *ArcSight Console User's Guide* for more information about the ArcSight data fields.

## PureSight Content Filter Field Mappings

ArcSight ESM Field	Device-Specific Field
Agent (Connector) Severity	0 = High; 1 = Medium; 2 = Low
Device Address	PURESIGHT_CF_IP
Device Custom Number 1	TABLE_NUMBER
Device Custom Number 2	LOG_ID
Device Event Class ID	BLOCK_CODE (0 = Block, 1 = Warn, 2 = Allow)
Device Host Name	PURESIGHT_CF_NAME
Device Product	'Platform'
Device Receipt Time	DATE_TIME_STAMP
Device Severity	BLOCK_CODE (0 = Block, 1 = Warn, 2 = Allow)
Device Vendor	'PureSight'
File Size	SIZE_IN_BYTES
Request URL	INTERNET_DOMAIN plus REMAINING_URL
Source Address	USER_IP
Source User Name	USER_NAME

## Advanced Configuration

The SmartConnector for PureSight Content Filter DB not only follows the table but also the ID, which is reset to 0 every time a new table is created.

When `preservestate` is enabled, the connector remembers the current table being processed and the location or ID in the table. Therefore, if for some reason the connector is stopped and you restart it, the connector starts reading the events from the same table and location.

Three advanced configuration options relate to this function:

`preservestate`

Enable so that the connector will remember and preserve the state of processing.

`startattable`

Use to specify the table where processing is to resume.

`startatid`

Use to specify the ID within the table where processing is to resume.

**For example:**

```
preservestate=true
startattable=-1
startatid=-1
```

Any value greater than or equal to 0 is a valid value.

**Any value less than 0, including -1, has a default meaning. For table, it means go to the last table or max table. For id, it means, go to the end of the table or max id in the table.**

**To configure these options, from the `$ARCSIGHT_HOME\current\user\agent` directory, edit the `agent.properties` file; change values as appropriate and save.**

## Troubleshooting

**"When I use the latest MySQL JDBC driver, the connector does not receive events."**

**Connector versions 7.2.4 and later use the latest MySQL JDBC driver. For connector versions 7.2.3 and earlier, you will need the MySQL 5.0.8 JDBC Driver, which you can download from:**

**<https://dev.mysql.com/downloads/connector/j/5.0.html>**