



# **Micro Focus Security ArcSight Connectors**

## **SmartConnector for Windows Event Log – Native: Microsoft Exchange Access Auditing**

### **Supplemental Configuration Guide**

Document Release Date: April 16, 2018

Software Release Date: April 16, 2019

## Legal Notices

Micro Focus  
The Lawn  
22-30 Old Bath Road  
Newbury, Berkshire RG14 1QN  
UK

<https://www.microfocus.com>

## Copyright Notice

© Copyright 2010-2020 Micro Focus or one of its affiliates

Confidential computer software. Valid license from Micro Focus required for possession, use or copying. The information contained herein is subject to change without notice.

The only warranties for Micro Focus products and services are set forth in the express warranty statements accompanying such products and services. Nothing herein should be construed as constituting an additional warranty. Micro Focus shall not be liable for technical or editorial errors or omissions contained herein.

No portion of this product's documentation may be reproduced or transmitted in any form or by any means, electronic or mechanical, including photocopying, recording, or information storage and retrieval systems, for any purpose other than the purchaser's internal use, without the express written permission of Micro Focus.

Notwithstanding anything to the contrary in your license agreement for Micro Focus ArcSight software, you may reverse engineer and modify certain open source components of the software in accordance with the license terms for those particular components. See below for the applicable terms.

US Governmental Rights. For purposes of your license to Micro Focus ArcSight software, "commercial computer software" is defined at FAR 2.101. If acquired by or on behalf of a civilian agency, the US Government acquires this commercial computer software and/or commercial computer software documentation and other technical data subject to the terms of the Agreement as specified in 48 CFR. 122.12 (Computer Software) and 122.11 (Technical Data) of the Federal Acquisition Regulation ("FAR") and its successors. If acquired by or on behalf of any agency within the Department of Defense ("DOD"), the US Government acquires this commercial computer software and/or commercial computer software documentation subject to the terms of the Agreement as specified in 48 CFR. 227.7202-3 of the DOD FAR Supplement ("DFARS") and its successors. This US Government Rights Section 18.11 is in lieu of, and supersedes, any other FAR, DFARS, or other clause or provision that addresses government rights in computer software or technical data.

## Trademark Notices

Adobe™ is a trademark of Adobe Systems Incorporated.

Microsoft® and Windows® are US registered trademarks of Microsoft Corporation.

UNIX® is a registered trademark of The Open Group.

## Documentation Updates

The title page of this document contains the following identifying information:

- Software Version number
- Document Release Date, which changes each time the document is updated
- Software Release Date, which indicates the release date of this version of the software

To check for recent updates or to verify that you are using the most recent edition of a document, go to:

[ArcSight Product Documentation on the Micro Focus Security Community](#)

## Revision History

Date	Description
08/30/2016	Updated versions supported.
02/16/2015	First edition of this configuration guide, for support of Microsoft Exchange Mailbox Access Auditing events 10100, 10102, 10104, and 10106 with Microsoft Exchange 2007 SP2.

## Support

### Contact Information

<b>Phone</b>	A list of phone numbers is available on the Technical Support Page: <a href="https://softwaresupportsoftwaregrp.com/support-contact-information">https://softwaresupportsoftwaregrp.com/support-contact-information</a>
<b>Support Web Site</b>	<a href="https://softwaresupportsoftwaregrp.com/">https://softwaresupportsoftwaregrp.com/</a>
<b>ArcSight Product Documentation</b>	<a href="https://community.softwaregrp.com/t5/ArcSight-Product-Documentation/ct-p/productdocs">https://community.softwaregrp.com/t5/ArcSight-Product-Documentation/ct-p/productdocs</a>

# Contents

- SmartConnector for Microsoft Exchange Mailbox Access Auditing Windows Event Log Native ..... 5
  - Product Overview ..... 5
  - Enable Mailbox Access Auditing ..... 5
    - Access the Audited Information ..... 8
    - Change Default Properties ..... 8
    - Exclude Service Accounts ..... 9
  - Connector Installation and Configuration ..... 9
  - Collect Events from the Event Log ..... 9
  - Device Event Mapping to ArcSight Fields .....10
    - Exchange Events 10100, 10101 Mappings .....10
    - Exchange Event 10102 Mappings .....11
    - Exchange Events 10104, 10106 Mappings .....11
  
- Send Documentation Feedback .....13

# SmartConnector for Microsoft Exchange Mailbox Access Auditing Windows Event Log Native

This guide provides information about the SmartConnector for Microsoft Exchange Access Auditing Windows Event Log Native and its event mappings to ArcSight data fields. This connector supports Microsoft Exchange Server 2007 and 2007 SP3 audit application events for Windows Server 2008, Windows Server 2008 R2, and Windows Server 2012 versions.

With Exchange Server 2010, Microsoft has added new native audit capabilities, such that the audit logs are maintained in the mailboxes themselves. Being able to get those audit logs is very difficult due to the potential number of mailboxes and the vast amount of data they may contain, and Windows Event Log integration for this will not work.

Therefore, for Microsoft Exchange 2010 and later versions, use the SmartConnector for Microsoft Exchange PowerShell, which retrieves Microsoft Exchange Server 2010 SP2 and 2013 Mailbox Audit logs remotely, and lets you specify the mailboxes to be audited.

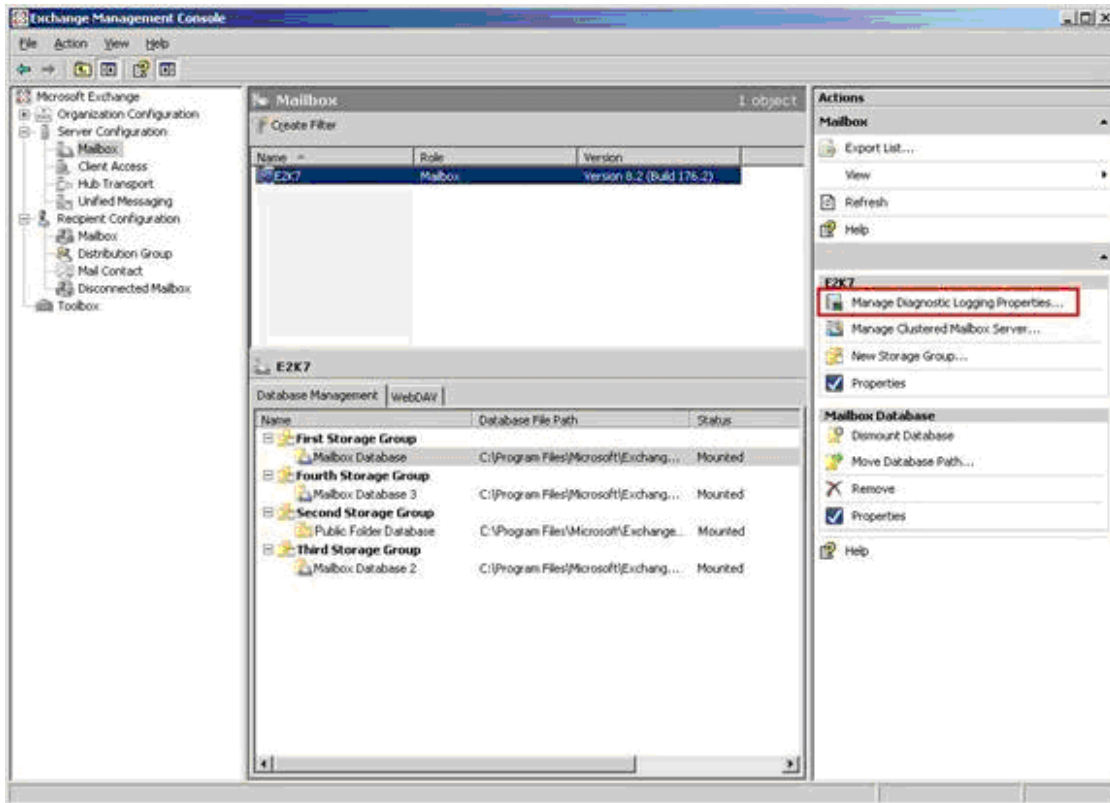
The *SmartConnector for Microsoft Windows Event Log – Native Windows Security Event Mappings* document provides the main mappings for the Windows Event Log SmartConnectors; the field mappings listed in this document are specifically for the SmartConnector for Windows Event Log – Native: Microsoft Exchange Audit. .

## Product Overview

Microsoft Exchange Server is the server side of a client-server, collaborative application product developed by Microsoft. It is part of Microsoft's line of server products, used by enterprises using Microsoft infrastructure solutions. Microsoft Exchange 2007 Service Pack 2 is supported by this SmartConnector.

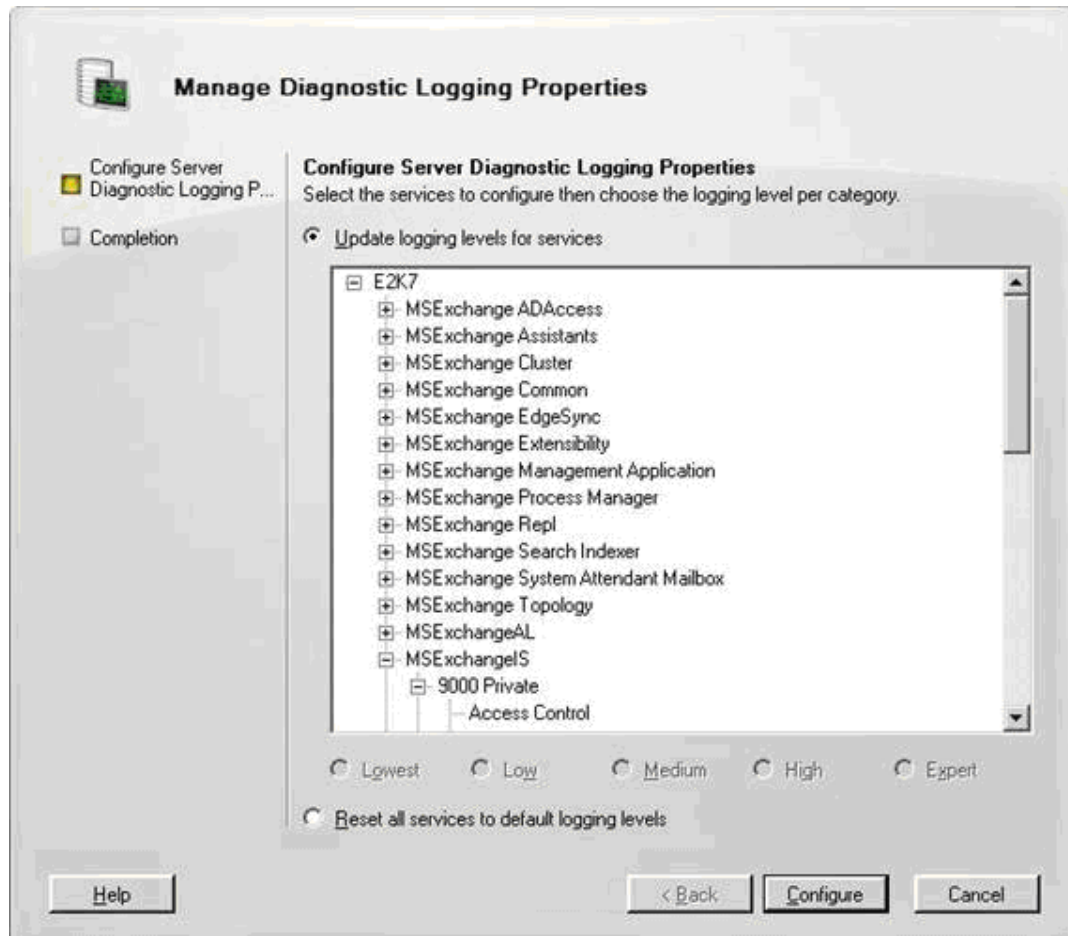
## Enable Mailbox Access Auditing

To access the configuration area for mailbox access auditing, use the Exchange Management Console. The following figure shows the new **Manage Diagnostic Logging Properties** menu option.



To configure mailbox access auditing on a particular mailbox server:

1. Select that server in the Exchange Management Console and then select the **Manage Diagnostics Logging Properties** menu option from the action pane; the **Manage Diagnostics Logging Properties** window is displayed.



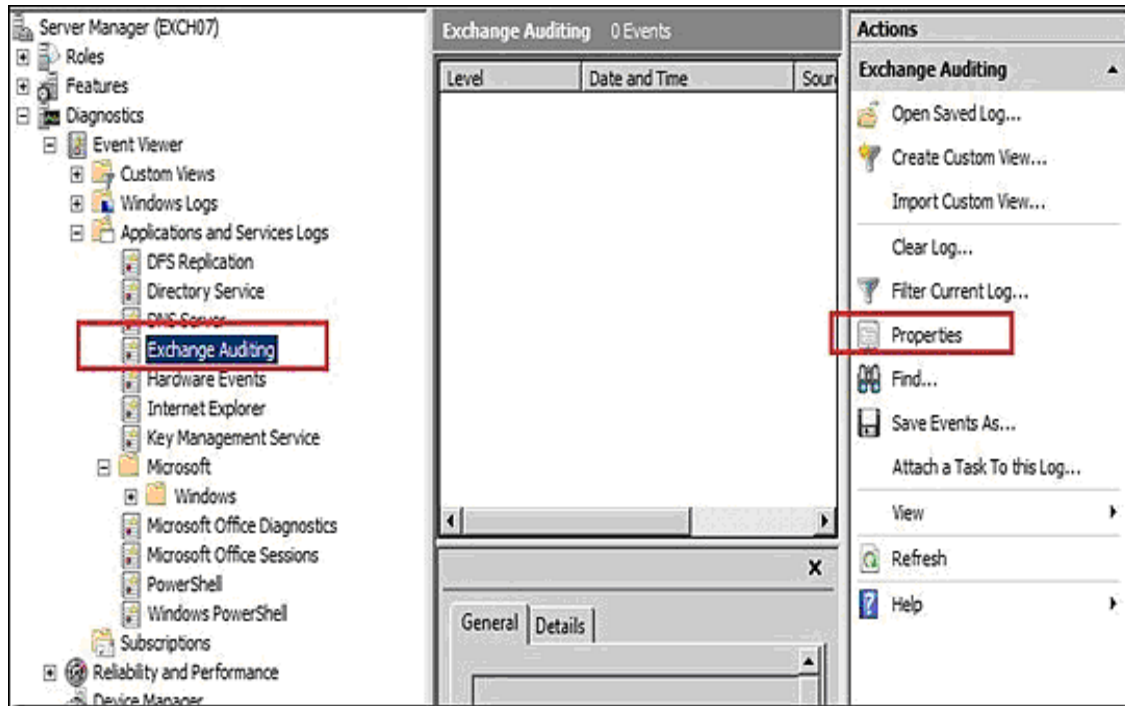
2. In this window, expand the **MSExchangeS** category and then expand the **9000 Private** category.
3. Under the **MSExchangeS\9000 Private** category, configure auditing for any or all of the four possible actions:
  - Folder Access, to log events that correspond to opening folders, such as the Inbox, Outbox, or Sent Items folders
  - Message Access, to log events that correspond to explicitly opening messages
  - Extended Send As, to log events that correspond to sending a message as a mailbox-enabled user
  - Extended Send On Behalf Of, to log events that correspond to sending a message on behalf of a mailbox-enabled user.
4. When you have finished configuring the auditing levels, click **Configure**.

For more information about Exchange mailbox access auditing, see [http://www.msexchange.org/articles\\_tutorials/exchange-server-2007/compliance-policies-archiving/exchange-2007-mailbox-access-auditing-part1.html](http://www.msexchange.org/articles_tutorials/exchange-server-2007/compliance-policies-archiving/exchange-2007-mailbox-access-auditing-part1.html)

For examples of configuring Exchange mailbox access auditing, see <http://www.howexchangeworks.com/2009/09/mailbox-access-auditing-in-exchange.html>

## Access the Audited Information

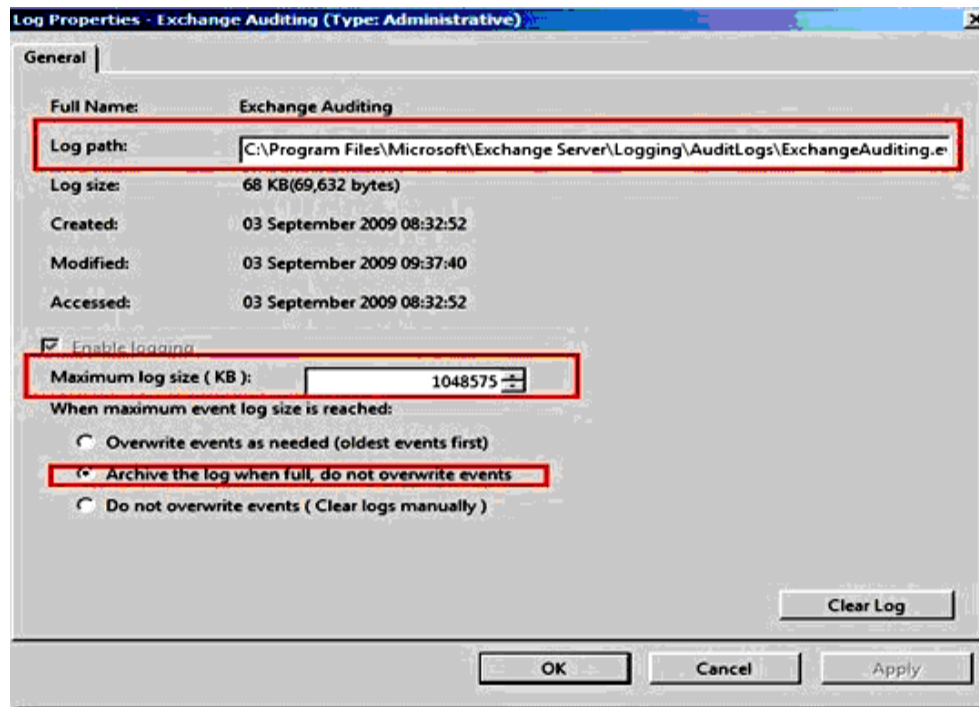
Now that mailbox access auditing is enabled, you can view the information logged by navigating to **Event Viewer -> Applications & Services Log -> Exchange Auditing**



## Change Default Properties

By default, the location for storing the logs is in the Exchange Server installation directory (**Drive\Program Files\Microsoft\Exchange Server\Logging\AuditLogs**). The default behavior is to archive the logs when it gets full; therefore, the location of the logs should be changed to a drive that has enough free space. You can do this by selecting the properties for the Exchange Auditing log and changing the options.





## Exclude Service Accounts

To keep from filling up your mailbox access log with events for service accounts that have full access to the mailboxes, you can run the following command to exclude service accounts from being audited.

```
Get-MailboxDatabase -identity "server\sg\dbname" | Add-ADPermission -User "service account" -ExtendedRights ms-Exch-Store-Bypass-Access-Auditing -InheritanceType All
```

## Connector Installation and Configuration

Follow the installation and configuration procedures in the *SmartConnector Configuration Guide for Microsoft Windows Event Log – Native*, selecting **Microsoft Windows Event Log – Native** as the connector to be configured.

## Collect Events from the Event Log

To set up the connector to collect application events:

1. From \$ARCSIGHT\_HOME\current\bin, double-click **runagentsetup.bat**.
2. Select **Modify Connector** on the window displayed and click **Next**.
3. Select **Modify connector parameters** and click **Next**.
4. Select Navigate to the **Modify table parameters** window.

5. To collect events from an application log, modify the **Application** field by selecting **true** for event collection in the Application field and enter **Exchange Auditing** in the **Custom Log Names** field. You can specify multiple Custom Log Names in a comma-separated format; for example:  
**Oracle Audit, Exchange Auditing**
6. Click **Next** to update the parameters; when you receive the successful update message, click **Next**.
7. Select **Exit** and click **Next** to exit the configuration wizard.
8. Restart the connector for your changes to take effect.

For more information about application event support, see the *SmartConnector Configuration Guide for Microsoft Windows Event Log – Native*.

## Device Event Mapping to ArcSight Fields

The following section lists the mappings of ArcSight data fields to the device's specific event definitions. See *ArcSight 101* for more information about the ArcSight data fields.

### Exchange Events 10100, 10101 Mappings

ArcSight ESM Field	Device-Specific Field
Device Custom IPv6 Address 3	Destination IPv6 Address
Device Custom Number 1	Source Process ID
Device Custom String 4	Mailbox Name
Device Custom String 5	Relatively Unique Identifier
File Name	%2 (Message ID or Folder name depending upon event)
File Path	%1 (Folder path)
Name	A folder in mailbox was opened by user.
Source Host Name	%9 (Account Name)
Source Process Name	%11 (Process Name)
Source Service Name	%13 (Application ID)
Target Address	Address
Destination User ID	%5 (Accessing User (full Exchange ID))
Destination User Name	%4 (Account Name)
Destination User Privileges	One of ('Administrative rights were used', '')

## Exchange Event 10102 Mappings

ArcSight ESM Field	Device-Specific Field
Device Custom IPv6 Address 3	Destination IPv6 Address
Device Custom Number 1	Source Process ID
Device Custom Number 3	Administrative Rights
Device Custom String 4	Mailbox Name
Device Custom String 5	Identifier
Device Custom String 6	Administrative Rights
File Name	Message ID or Folder name, depending upon event
File Path	Folder path (when relevant)
Name	A message in mailbox was opened by user.
Source Host Name	Machine Name
Source Process Name	Process Name
Source Service Name	Application ID
Source User ID	Accessing User (full Exchange ID)
Source User Name	Account Name
Target Address	Address

## Exchange Events 10104, 10106 Mappings

ArcSight ESM Field	Device-Specific Field
Device Custom IPv6 Address 3	Destination IPv6 Address
Device Custom Number 1	Source Process ID
Device Custom String 4	Mailbox Name
Device Custom String 5	Relatively Unique Identifier
Device Custom String 6	Sent as user
File Name	%3 (Message ID or Folder name, depending upon event)
Name	User sent a message on behalf of another user.
Source Host Name	10% (Machine Name)
Source Process Name	12% (Process Name)
Source Service Name	14% (Application ID)

ArcSight ESM Field	Device-Specific Field
Destination User ID	%6 (Accessing User (full Exchange ID))
Destination User Name	%5 (Account Name)
Destination User Privileges	One of ('Administrative rights were used', '')
Destination Host Name	%11 (Address)
Destination Address	%11 (Address)

# Send Documentation Feedback

If you have comments about this document, you can [contact the documentation team](#) by email. If an email client is configured on this computer, click the link above and an email window opens with the following information in the subject line:

## **Feedback on Supplemental Configuration Guide (Connectors )**

Just add your feedback to the email and click send.

If no email client is available, copy the information above to a new message in a web mail client, and send your feedback to [arcsight\\_doc@microfocus.com](mailto:arcsight_doc@microfocus.com).

We appreciate your feedback!