



Micro Focus Security ArcSight Connectors

SmartConnector for Cisco ISE Syslog

Configuration Guide

June 18, 2020

Configuration Guide

SmartConnector for Cisco ISE Syslog

June 18, 2020

Copyright © 2013 –2020 Micro Focus or one of its affiliates.

Legal Notices

Micro Focus

The Lawn

22-30 Old Bath Road

Newbury, Berkshire RG14 1QN

UK

<https://www.microfocus.com>.

Confidential computer software. Valid license from Micro Focus required for possession, use or copying. The information contained herein is subject to change without notice.

The only warranties for Micro Focus products and services are set forth in the express warranty statements accompanying such products and services. Nothing herein should be construed as constituting an additional warranty. Micro Focus shall not be liable for technical or editorial errors or omissions contained herein.

No portion of this product's documentation may be reproduced or transmitted in any form or by any means, electronic or mechanical, including photocopying, recording, or information storage and retrieval systems, for any purpose other than the purchaser's internal use, without the express written permission of Micro Focus.

Notwithstanding anything to the contrary in your license agreement for Micro Focus ArcSight software, you may reverse engineer and modify certain open source components of the software in accordance with the license terms for those particular components. See below for the applicable terms.

U.S. Governmental Rights. For purposes of your license to Micro Focus ArcSight software, "commercial computer software" is defined at FAR 2.101. If acquired by or on behalf of a civilian agency, the U.S. Government acquires this commercial computer software and/or commercial computer software documentation and other technical data subject to the terms of the Agreement as specified in 48 C.F.R. 12.212 (Computer Software) and 12.211 (Technical Data) of the Federal Acquisition Regulation ("FAR") and its successors. If acquired by or on behalf of any agency within the Department of Defense ("DOD"), the U.S. Government acquires this commercial computer software and/or commercial computer software documentation subject to the terms of the Agreement as specified in 48 C.F.R. 227.7202- 3 of the DOD FAR Supplement ("DFARS") and its successors. This U.S. Government Rights Section 18.11 is in lieu of, and supersedes, any other FAR, DFARS, or other clause or provision that addresses government rights in computer software or technical data.

Trademark Notices

Adobe™ is a trademark of Adobe Systems Incorporated.

Microsoft® and Windows® are U.S. registered trademarks of Microsoft Corporation.

UNIX® is a registered trademark of The Open Group.

Documentation Updates

The title page of this document contains the following identifying information:

* Software Version number

* Document Release Date, which changes each time the document is updated

* Software Release Date, which indicates the release date of this version of the software

To check for recent updates or to verify that you are using the most recent edition of a document, go to:

<https://community.microfocus.com/t5/ArcSight-Product-Documentation/ct-p/productdocs>

Revision History

Date	Description
06/18/2020	Removed Source Address and Source Host Name mappings from Cisco ISE Syslog Mappings to ArcSight ESM Events.
06/19/2019	Added a new mapping to the Cisco ISE Syslog Mappings to ArcSight ESM Events table.
11/19/2018	Added support for version 2.2.
10/17/2017	Added encryption parameters to Global Parameters.
03/15/2017	Updated mapping definition for Device Receipt Time in the Cisco ISE Syslog Mappings table.
11/30/2016	Updated installation procedure for setting preferred IP address mode.
05/15/2015	Updated versions supported. Added new Syslog File parameters.
03/31/2015	Added support for v1.3. Updated configuration information.
02/16/2015	Added mappings for Destination and Source User Names to Key Value mappings. Added parameter for Syslog Daemon connector configuration.
11/15/2013	First edition of this Configuration Guide.

SmartConnector for Cisco ISE Syslog

This guide provides information for installing the SmartConnector for Cisco Identity Services Engine (ISE) Syslog and configuring the ISE device for syslog event collection. This connector supports Cisco ISE 1.2, 1.3 and 2.2.

Product Overview

Cisco Identity Services Engine (ISE) is the next generation of Cisco ACS. ACS Appliance 1121 is upgradable to ISE. Cisco ISE is an identity and access control policy platform that enables enterprises to enforce compliance, enhance infrastructure security, and streamline their service operations. The architecture of Cisco ISE allows enterprises to gather real-time contextual information from networks, users, and devices. Administrators can use that information to make proactive governance decisions by tying identity to various network elements including access switches, wireless LAN controllers (WLCs), virtual private network (VPN) gateways, and data center switches. Cisco ISE is a key component of the Cisco Security Group Access Solution.


Configuration

Configure the Device for Event Collection

To configure a Cisco ISE device to send syslog events to a syslog server:

- 1** From the ISE Administration Interface, choose **Administration > System > Logging > Remote Logging Targets**. Click **Add** in the Remote Logging Targets page.
- 2** Configure the following fields:
 - a Name:** Enter the name of the new target.
 - b Target Type:** By default it is set to Syslog. The value of this field cannot be changed.
 - c Description:** Enter a brief description of the new target.
 - d IP Address:** Enter the IP address of the destination machine where you want to store the logs.
 - e Port:** Enter the port number of the destination machine.
 - f Facility Code:** Choose the syslog facility code to be used for logging. Valid options are Local0 through Local7.
 - g Maximum Length:** Enter the maximum length of the remote log target messages. Valid options are from 200 to 1024 bytes.

- h Buffer Message When Server Down:** Set the buffer size for each target. By default, it is set to 100 MB.
 - i Buffer Size (MB):** Set the buffer size for each target. By default, it is set to 100 MB.
 - j Reconnect Timeout (Sec):** Give in seconds how long the TCP and secure syslogs will be kept before being discarded, when the server is down.
 - k Select CA Certificate:** Select a client certificate.
 - l Ignore Server Certificate Validation:** Check this check-box if you want ISE to ignore server certificate authentication and accept any syslog server.
- 3** Click **Save**.
 - 4** Go to the **Remote Logging Targets** page and verify the creation of the new target.

 After you have created the syslog storage location on Remote Logging Target page, you should map the storage location to the required logging categories to receive the logs. You must add a syslog category to the logging categories at **Administration > System > Logging > Logging Categories** before setting remote target. Remote target must be set before configuring remote logging. Remember to set all Cisco ISE nodes to the Coordinated Universal Time (UTC) timezone to ensure reports and logs from the various nodes in your deployment are always in sync with regard to the timestamps.

Enable Time-Stamps on Log Messages

By default, log messages are not time-stamped. To enable time-stamping of log messages and debug messages, use the following commands in global configuration mode:

```
<Endpoint device>(Config)#service timestamps log datetime
localtime
```

```
<Endpoint device>(Config)#service timestamps debug datetime
localtime
```

Enable System Message Logging

System message logging is enabled by default. It must be enabled to send messages to any destination other than the console. To reenble message logging after it has been disabled, use the following command in global configuration mode:

```
<Endpoint device>(config)#logging on
```

Limit the Error Message Severity Level

You can limit the number of messages by specifying the severity level of the error message. To do so, use the following command in global configuration mode:

```
<Endpoint device>(config)#logging trap level
```

Keyword	Level	Description	Syslog Def
emergencies	0	System unusable	LOG_EMERG
alerts	1	Immediate action needed	LOG_ALERT
critical	2	Critical conditions	LOG_CRIT
errors	3	Error conditions	LOG_ERR
warnings	4	Warning conditions	LOG_WARNING
notifications	5	Normal but significant condition	LOG_NOTICE
informational	6	Informational messages only	LOG_INFO
debugging	7	Debugging messages	LOG_DEBUG

Define the UNIX System Logging Facility

You can log messages produced by UNIX system utilities. To do this, enable this type of logging and define the UNIX system facility from which you want to log messages. Consult the operator manual for your UNIX operating system for more information about these UNIX system facilities.

To define UNIX system facility message logging, use the following command in global configuration mode:

```
<Endpoint device>(config)#logging facility facility-type
```

Configure the Syslog SmartConnectors

The three ArcSight Syslog SmartConnectors are:


- Syslog Daemon
- Syslog Pipe
- Syslog File


The Syslog Daemon SmartConnector

The Syslog Daemon SmartConnector is a syslogd-compatible daemon designed to work in operating systems that have no syslog daemon in their default configuration, such as Microsoft Windows. The SmartConnector for Syslog Daemon implements a UDP receiver on port 514 (configurable) by default that can be used to receive syslog events. Use of the TCP protocol or a different port can be configured manually.


If you are using SmartConnector for Syslog Daemon, add the following statement in the `rsyslog.conf` file to forward Oracle Audit events so that Syslog Daemon will start receiving events: `*.* @(remote/local-host-IP):514`

Sample example: `local1.warning @@10.0.0.1:514`

 You can either use `*.*` to read all Syslog events or you can filter specific events by replacing regex with the specific event name. For example: `*.* @(remote/local-host-IP):514` and `local1.warning @@10.0.0.1:514`

 Use `@@` to send events over a TCP connection and use `@` to send events over an UDP connection.

If you are running SmartConnector for Syslog Daemon on the same machine as the Oracle server, you must provide the IP address of the local host. If you want to forward events to other machines, you must provide the IP address of the same.

 Messages longer than 1024 bytes may be split into multiple messages on syslog daemon; no such restriction exists on syslog file or pipe.

The Syslog Pipe and File SmartConnectors

When a syslog daemon is already in place and configured to receive syslog messages, an extra line in the syslog configuration file (`rsyslog.conf`) can be added to write the events to either a **file** or a system **pipe** and the ArcSight SmartConnector can be configured to read the events from it. **In this scenario, the ArcSight SmartConnector runs on the same machine as the syslog daemon. Therefore, you must do additional configurations for the ArcSight syslog file or syslog pipe SmartConnectors in the system where all Syslog Daemon SmartConnector configurations are done.**

The **Syslog Pipe** SmartConnector is designed to work with an existing syslog daemon. This SmartConnector is especially useful when storage is a factor. In this case, syslogd is configured to write to a named pipe, and the Syslog Pipe SmartConnector reads from it to receive events.

The **Syslog File** SmartConnector is similar to the Pipe SmartConnector; however, this SmartConnector monitors events written to a syslog file (such as `messages.log`) rather than to a system pipe.

Configure the Syslog Pipe or File SmartConnector

This section provides information about how to set up your existing syslog infrastructure to send events to the ArcSight Syslog Pipe or File SmartConnector.

The standard UNIX implementation of a syslog daemon reads the configuration parameters from the `/etc/rsyslog.conf` file, which contains specific details about which events to write to files, write to pipes, or send to another host. First, create a pipe or a file; then modify the `/etc/rsyslog.conf` file to send events to it.

For syslog pipe:

- 1 Create a pipe by executing the following command:

```
mkfifo /var/tmp/syspipe
```

- 2 Add the following line to your **/etc/rsyslog.conf** file:

```
*.debug /var/tmp/syspipe
```

or

```
*.debug |/var/tmp/syspipe
```

depending on your operating system.

- 3 After you have modified the file, restart the syslog daemon either by executing the scripts **/etc/init.d/syslogd stop** and **/etc/init.d/syslogd start**, or by sending a `configuration restart` signal.

On RedHat Linux, you would execute:

```
service syslog restart
```

On Solaris, you would execute:

```
kill -HUP `cat /var/run/syslog.pid`
```

This command forces the syslog daemon to reload the configuration and start writing to the pipe you just created.

For syslog file:

Create a file or use the default for the file into which log messages are to be written.

After editing the `/etc/rsyslog.conf` file, be sure to restart the syslog daemon as described above.

When you follow the SmartConnector Installation Wizard, you will be prompted for the absolute path to the syslog file or pipe you created.

Install the SmartConnector

The following sections provide instructions for installing and configuring your selected SmartConnector.

Syslog Installation

Install this SmartConnector (on the syslog server or servers identified in the *Configuration* section) using the SmartConnector Installation Wizard appropriate for your operating system. The wizard will guide you through the installation process. When prompted, select one of the following **Syslog** connectors (see *Configure the Syslog SmartConnectors* in this guide for more information):

- Syslog Daemon
- Syslog Pipe
- Syslog File

Because all syslog SmartConnectors are sub-connectors of the main syslog SmartConnector, the name of the specific syslog SmartConnector you are installing is not required during installation.

The syslog daemon connector by default listens on port 514 (configurable) for UDP syslog events; you can configure the port number or use of the TCP protocol manually. The syslog pipe and syslog file connectors read events from a system pipe or file, respectively. Select the one that best fits your syslog infrastructure setup.

Prepare to Install Connector

Before you install any SmartConnectors, make sure that the ArcSight products with which the connectors will communicate have already been installed correctly (such as ArcSight ESM or ArcSight Logger).

For complete product information, read the *Administrator's Guide* as well as the *Installation and Configuration* guide for your ArcSight product before installing a new SmartConnector. If you are adding a connector to the ArcSight Management Center, see the *ArcSight Management Center Administrator's Guide* for instructions, and start the installation procedure at "Set Global Parameters (optional)" or "Select Connector and Add Parameter Information."


Before installing the SmartConnector, be sure the following are available:

- Local access to the machine where the SmartConnector is to be installed
- Administrator passwords

Install Core Software

Unless specified otherwise at the beginning of this guide, this SmartConnector can be installed on all ArcSight supported platforms; for the complete list, see the *SmartConnector Product and Platform Support* document, available from the Micro Focus SSO and Protect 724 sites.

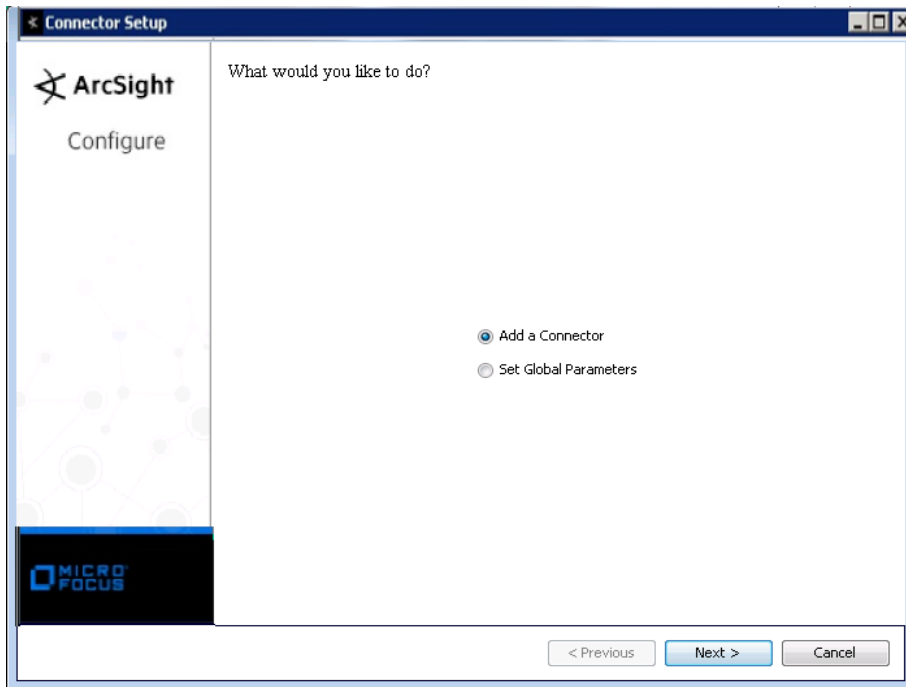
- 1** Download the SmartConnector executable for your operating system from the Micro Focus SSO site.
- 2** Start the SmartConnector installation and configuration wizard by running the executable.

-  When installing a syslog daemon SmartConnector in a UNIX environment, run the executable as 'root' user.

Follow the wizard through the following folder selection tasks and installation of the core connector software:

Introduction
 Choose Install Folder
 Choose Shortcut Folder
 Pre-Installation Summary
 Installing...

- 3** When the installation of SmartConnector core component software is finished, the following window is displayed:



Set Global Parameters (optional)

If you choose to perform any of the operations shown in the following table, do so before adding your connector. You can set the following parameters:

Parameter	Setting
FIPS mode	Select 'Enabled' to enable FIPS compliant mode. To enable FIPS Suite B Mode, see the SmartConnector User Guide under "Modifying Connector Parameters" for instructions. Initially, this value is set to 'Disabled'.
Remote Management	Select 'Enabled' to enable remote management from ArcSight Management Center. When queried by the remote management device, the values you specify here for enabling remote management and the port number will be used. Initially, this value is set to 'Disabled'.
Remote Management Listener Port	The remote management device will listen to the port specified in this field. The default port number is 9001.

Parameter	Setting
Preferred IP Version	When both IPv4 and IPv6 IP addresses are available for the local host (the machine on which the connector is installed), you can choose which version is preferred. Otherwise, you will see only one selection. The initial setting is IPv4.

The following parameters should be configured only if you are using Micro Focus SecureData solutions to provide encryption. See the *Micro Focus SecureData Architecture Guide* for more information.

Parameter	Setting
Format Preserving Encryption	Data leaving the connector machine to a specified destination can be encrypted by selecting 'Enabled' to encrypt the fields identified in 'Event Fields to Encrypt' before forwarding events. If encryption is enabled, it cannot be disabled. Changing any of the encryption parameters again will require a fresh installation of the connector.
Format Preserving Policy URL	Enter the URL where the Micro Focus SecureData Server is installed.
Proxy Server (https)	Enter the proxy host for https connection if any proxy is enabled for this machine.
Proxy Port	Enter the proxy port for https connection if any proxy is enabled for this machine.
Format Preserving Identity	The Micro Focus SecureData client software allows client applications to protect and access data based on key names. This key name is referred to as the identity. Enter the user identity configured for Micro Focus SecureData.
Format Preserving Secret	Enter the secret configured for Micro Focus SecureData to use for encryption.
Event Fields to Encrypt	Recommended fields for encryption are listed; delete any fields you do not want encrypted and add any string or numeric fields you want encrypted. Encrypting more fields can affect performance, with 20 fields being the maximum recommended. Also, because encryption changes the value, rules or categorization could also be affected. Once encryption is enabled, the list of event fields cannot be edited.

After making your selections, click **Next**. A summary screen is displayed. Review the summary of your selections and click **Next**. Click **Continue** to return to proceed with "Add a Connector" window. Continue the installation procedure with "Select Connector and Add Parameter Information."

Select Connector and Add Parameter Information

- 1 Select **Add a Connector** and click **Next**. If applicable, you can enable FIPS mode and enable remote management later in the wizard after SmartConnector configuration.
- 2 Select **Syslog Daemon, Pipe, or File** and click **Next**.
- 3 Enter the required SmartConnector parameters to configure the SmartConnector, then click **Next**.

Syslog Daemon Parameters		
	<i>Network port</i>	The SmartConnector for Syslog Daemon listens for syslog events from this port.
	<i>IP Address</i>	The SmartConnector for Syslog Daemon listens for syslog events only from this IP address (accept the default (ALL) to bind to all available IP addresses).
	<i>Protocol</i>	The SmartConnector for Syslog Daemon uses the selected protocol (UDP or Raw TCP) to receive incoming messages.

	<i>Forwarder</i>	Change this parameter to 'true' only if the events being processed are coming from another SmartConnector sending to a CEF Syslog destination, and that destination also has CEF forwarder mode enabled. That allows attributes of the original connector to be retained in the original agent fields.
Syslog Pipe Parameter	<i>Pipe Absolute Path Name</i>	Absolute path to the pipe, or accept the default: <code>/var/tmp/syspipe</code>
Syslog File Parameters	<i>File Absolute Path Name</i>	<p>Enter the full path name for the file from which this connector will read events or accept the default: <code>\var\adm\messages</code> (Solaris) or <code>\var\log\messages</code> (Linux).</p> <p>A wildcard pattern can be used in the file name; however, in realtime mode, rotation can occur only if the file is over-written or removed from the folder. Realtime processing mode assumes following external rotation.</p> <p>For date format log rotation, the device writes to 'filename.timestamp.log' on a daily basis. At a specified time, the device creates a new daily log and begins to write to it. The connector detects the new log and terminates the reader thread to the previous log after processing is complete. The connector then creates a new reader thread to the new 'filename.timestamp.log' and begins processing that file. To enable this log rotation, use a date format in the file name as shown in the following example:</p> <pre>filename 'yyyy-MM-dd'.log;</pre> <p>For index log rotation, the device writes to indexed files - 'filename.log.001', 'filename.log.002', 'filename.log.003', and so on. At startup, the connector processes the log with highest index. When the device creates a log with a greater index, the connector terminates the reader thread to the previous log after processing completes, creates a thread to the new log, and begins processing that log. To enable this log rotation, use an index format, as shown in the following example:</p> <pre>filename '%d,1,99,true'.log;</pre> <p>Specifying 'true' indicates that it is allowed for the index to be skipped; for example, if 5 appears before 4, processing proceeds with 5 and will not read 4, even if 4 appears later. Use of 'true' is optional.</p>
	<i>Reading Events Real Time or Batch</i>	Specify whether file is to be read in batch or realtime mode. For batch mode, all files are read from the beginning. The 'Action Upon Reaching EOF' and 'File Extension if Rename Action' parameters apply for batch mode only.
	<i>Action Upon Reaching EOF</i>	For batch mode, specify 'None', 'Rename', or 'Delete' as the action to be performed to the file when the connector has finished reading and reaches end of file (EOF). For realtime mode, leave the default value of 'None' for this parameter.
	<i>File Extension If Rename Action</i>	For batch mode, specify the extension to be added to the file name if the action upon EOF is 'Rename' or accept the default value of '.processed'.

Select a Destination

- 1 The next window asks for the destination type; select a destination and click **Next**. For information about the destinations listed, see the *ArcSight SmartConnector User Guide*.
- 2 Enter values for the destination. For the ArcSight Manager destination, the values you enter for **User** and **Password** should be the same ArcSight user name and password you created during the ArcSight Manager installation. Click **Next**.
- 3 Enter a name for the SmartConnector and provide other information identifying the connector's use in your environment. Click **Next**. The connector starts the registration process.

- 4 If you have selected ArcSight Manager as the destination, the certificate import window for the ArcSight Manager is displayed. Select **Import the certificate to the connector from destination** and click **Next**. (If you select **Do not import the certificate to connector from destination**, the connector installation will end.) The certificate is imported and the **Add connector Summary** window is displayed.

Complete Installation and Configuration

- 1 Review the **Add Connector Summary** and click **Next**. If the summary is incorrect, click **Previous** to make changes.
- 2 The wizard now prompts you to choose whether you want to run the SmartConnector as a stand-alone process or as a service. If you choose to run the connector as a stand-alone process, select **Leave as a standalone application**, click **Next**, and continue with step 5.
- 3 If you chose to run the connector as a service, with **Install as a service** selected, click **Next**. The wizard prompts you to define service parameters. Enter values for **Service Internal Name** and **Service Display Name** and select **Yes** or **No** for **Start the service automatically**. The **Install Service Summary** window is displayed when you click **Next**.
- 4 Click **Next** on the summary window.
- 5 To complete the installation, choose **Exit** and Click **Next**.

For instructions about upgrading the connector or modifying parameters, see the *SmartConnector User Guide*.

Run the SmartConnector

SmartConnectors can be installed and run in stand-alone mode, on Windows platforms as a Windows service, or on UNIX platforms as a UNIX daemon, depending upon the platform supported. On Windows platforms, SmartConnectors also can be run using shortcuts and optional Start menu entries.

If the connector is installed in stand-alone mode, it must be started manually and is not automatically active when a host is restarted. If installed as a service or daemon, the connector runs automatically when the host is restarted. For information about connectors running as services or daemons, see the *ArcSight SmartConnector User Guide*.

To run all SmartConnectors installed in stand-alone mode on a particular host, open a command window, go to `$ARCSIGHT_HOME\current\bin` and run: `arcsight connectors`

To view the SmartConnector log, read the file `$ARCSIGHT_HOME\current\logs\agent.log`; to stop all SmartConnectors, enter `Ctrl+C` in the command window.

Device Event Mapping to ArcSight Fields

The following section lists the mappings of ArcSight data fields to the device's specific event definitions. See the *ArcSight Console User's Guide* for more information about the ArcSight data fields.

Cisco ISE v1.3 Syslog Mappings to ArcSight ESM Events

ArcSight ESM Field	Device-Specific Field
Agent (Connector) Severity	Very High = FATAL; High = ERROR; Medium = WARN; Low = INFO, DEBUG, NOTICE, UNKNOWN
Device Event Category	msg
Device Event Class ID	One of (msgcode,tag)
Device Facility	tag
Device Host Name	address
Device Product	'Cisco ISE'
Device Receipt Time	timestamp
Device Severity	severity
Device Vendor	'Cisco'
Device Version	'1.3'
Message	Message
Name	One of (msg,tag)

Cisco ISE Syslog Mappings to ArcSight ESM Events

ArcSight ESM Field	Device-Specific Field
Agent (Connector) Severity	Very High = FATAL; High = ERROR; Medium = WARN; Low = INFO, DEBUG, NOTICE, UNKNOWN
Device Event Category	msg
Device Event Class ID	One of (msgcode,tag)
Device Facility	tag
Device Host Name	address
Device Receipt Time	One of (timestamp,timestamp_header)
Device Severity	One of (mergedevent.deviceSeverity, severity, "UNKNOWN")
Event Outcome	msg
External ID	msgid
File ID	SSID
Message	message
Name	One of (msg,tag)

Cisco ISE Key Value Event Mappings to ArcSight ESM Events

ArcSight ESM Field	Device-Specific Field
Destination MAC Address	Called-Station-ID
Destination User Name	User-Name

ArcSight ESM Field	Device-Specific Field
Device Action	Response, Action
Device Custom Number 1	Configuration Version ID
Device Custom Number 2	NAS Port
Device Custom Number 3	Framed-MTU
Device Custom String 1	Authentication Method
Device Custom String 2	Service Type
Device Custom String 5	Response
Device Custom String 6	Network Device Groups
Source MAC Address	Calling-Station-ID
Source User Name	One of (UserName, Response)
