



**Hewlett Packard**  
Enterprise

# **HPE Security ArcSight Connectors**

SmartConnector for Dell ChangeAuditor DB

Configuration Guide

February 15, 2017

## Configuration Guide

### SmartConnector for Dell ChangeAuditor DB

February 15, 2017

Copyright © 2003 – 2017 Hewlett Packard Enterprise Development LP

### Warranty

The only warranties for Hewlett Packard Enterprise products and services are set forth in the express warranty statements accompanying such products and services. Nothing herein should be construed as constituting an additional warranty. Hewlett Packard Enterprise Development LP shall not be liable for technical or editorial omissions contained herein. The information contained herein is subject to change without notice. The network information used in the examples in this document (including IP addresses and hostnames) is for illustration purposes only. Hewlett Packard Enterprise Development LP products are highly flexible and function as you configure them. The accessibility, integrity, and confidentiality of your data is your responsibility. Implement a comprehensive security strategy and follow good security practices. This document is confidential.

### Restricted Rights Legend

Confidential computer software. Valid license from Hewlett Packard Enterprise Development LP required for possession, use or copying. Consistent with FAR 12.211 and 12.212, Commercial Computer Software, Computer Software Documentation, and Technical data for Commercial Items are licensed to the U.S. Government under vendor's standard commercial license.

Follow this link to see a complete statement of Hewlett Packard Enterprise Development LP copyrights, trademarks and acknowledgements:

<https://www.protect724.hpe.com/docs/DOC-13026>.

## Revision History

---

Date	Description
02/15/2017	Removed support for versions 5.8 and 6.5 due to end of support by vendor.
11/30/2016	Updated installation procedure for setting preferred IP address mode.
10/28/2016	Added support for versions 6.5 and 6.7 events.
09/30/2016	Added support for version 6.7.
02/15/2016	Removed ODBC support due to Java 8 implementation.
06/30/2015	Renamed connector due to product acquisition by Dell.
02/16/2015	Added support for version 6.5.
02/14/2014	Updated parameter screen image.
09/30/2013	Updated "Create an ODBC Data Source" section and added troubleshooting information regarding connection failure.
08/15/2013	First release of SmartConnector documentation.

---

## Contents

Product Overview.....	4
Configuration.....	4
Enable Event Logging in ChangeAuditor .....	4
Download and Install a JDBC Driver .....	4
Add a JDBC Driver to the Connector Appliance/ArcSight Management Center.....	5
Configure the JDBC Driver and Windows Authentication.....	6
Install the SmartConnector.....	6
Prepare to Install Connector .....	7
Install Core Software.....	7
Download SQL Server JDBC Driver .....	8
Set Global Parameters (optional).....	8
Select Connector and Add Parameter Information.....	9
Select a Destination .....	10
Complete Installation and Configuration .....	11
Run the SmartConnector .....	11
Device Event Mapping to ArcSight Fields .....	12
Troubleshooting .....	13

## SmartConnector for Dell ChangeAuditor DB

This guide provides information for installing the SmartConnector for Dell ChangeAuditor DB and configuring the device for event collection. Dell ChangeAuditor for Active Directory version 6.7 is supported.

### Product Overview

ChangeAuditor for Active Directory tracks all Microsoft(R) Active Directory configuration changes in real-time. From Group Policy and Schema events to group and operational changes, it tracks, audits, reports, and alerts on changes that impact your directory, without the overhead of native auditing.

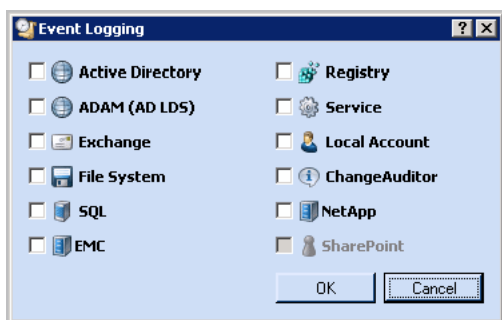
### Configuration

#### Enable Event Logging in ChangeAuditor

This section provides instructions for configuring ChangeAuditor to log events. Configure ChangeAuditor before you install the SmartConnector.

To configure event logging in ChangeAuditor for Active Directory:

- 1 Open the **Administration Tasks** tab found in ChangeAuditor Agent Configuration page.
- 2 From the left-hand pane, select **Agent** (under the Configuration task list) to display the Agent Configuration page.
- 3 Select the **Event Logging** tool bar button. The Event Logging dialog appears.



- 4 In the **Event Logging** dialog, select the type of event logging to be enabled.
- 5 Select **OK** to save your selection and close the dialog.

For more information, see the *ChangeAuditor User Guide*.

#### Download and Install a JDBC Driver

During the installation process, you will be directed to leave the wizard and copy the JDBC driver file you download to a SmartConnector folder. For information about and to download the MS SQL Server JDBC Driver, see:

<http://msdn.microsoft.com/en-us/sqlserver/aa937724>



Different versions of the JDBC driver are required for different SQL Server database versions; be sure to use the correct driver for your database version. The name of the jar file may be different for some JDBC driver versions.

Install the driver.

For software connectors, copy the jar file appropriate for your SQL Server version from the installation folder for the SQL Server JDBC driver to a temporary location; you will copy this file to `$ARCSIGHT_HOME/current/user/agent/lib`, (where `$ARCSIGHT_HOME` refers to the SmartConnector installation folder, such as `c:\ArcSight\SmartConnectors`) after the core SmartConnector software has been installed at step 3 of Install the SmartConnector. Copy only the jar file associated with the version of the driver to be installed to this location.

## Add a JDBC Driver to the Connector Appliance/ArcSight Management Center

After downloading and extracting the JDBC driver, upload the driver into the repository and apply it to the appropriate container or containers, as described in this section.

- 1 From the Connector Appliance/ArcSight Management Center, select **Setup -> Repositories**.
- 2 Select **JDBC Drivers** from the left pane and click the **JDBC Drivers** tab.
- 3 Click **Upload to Repository**.
- 4 From the **Repository File Creation Wizard**, select **Individual Files**, then click **Next**.
- 5 Retain the default selection and click **Next**.
- 6 Click **Upload** and locate and select the `.jar` file you downloaded in step 3 of SmartConnector Installation.
- 7 Click **Submit** to add the specified file to the repository and click **Next** to continue.
- 8 After adding all files you require, click **Next**.
- 9 In the **Name** field, enter a descriptive name for the zip file (`JDBCdriver`, for example). Click **Next**.
- 10 Click **Done** to complete the process; the newly added file is displayed in the **Name** field under **Add Connector JDBC Driver File**.
- 11 To apply the driver file, select the driver `.zip` file and click the up arrow to invoke the **Upload Container Files** wizard. Click **Next**.
- 12 Select the container or containers into which the driver is to be uploaded; click **Next**.
- 13 Click **Done** to complete the process.
- 14 Add the connector through the Connector Appliance/ArcSight Management Center interface; see the *Connector Appliance/ArcSight Management Center Online Help* for detailed information. Descriptions of parameters to be entered during connector configuration are provided in the "Install the SmartConnector" section of this guide.

## Configure the JDBC Driver and Windows Authentication

This section provides guidance on how to use a JDBC driver with SmartConnectors that connect to Microsoft SQL Servers using Windows Authentication only. As previously described, download the SQL JDBC drivers from Microsoft and install the driver before beginning this procedure.



The JDBC driver does not provide function to supply Windows authentication credentials such as user name and password. In such cases, the applications must use SQL Server Authentication. When installing the connector on a non-Windows platform, configure the Microsoft SQL Server for Mixed Mode Authentication or SQL Server Authentication.

Microsoft Type 4 JDBC drivers (versions 4.0 or later) support integrated authentication. Windows Authentication works only when using one of these drivers. You also will need to add `;integratedSecurity=true` to the JDBC URL entry for the connection to your database.

- 1 Copy the `sqljdbc_auth.dll` file from the JDBC driver download to the `$(ARCSIGHT_HOME)\jre\bin` directory. For example, the JDBC driver download path for SQL JDBC driver version 4.0 for 32-bit environment would be `sqljdbc_4.0\enu\auth\x86\sqljdbc_auth.dll` and, for 64-bit environment, `sqljdbc_4.0\enu\auth\x64\sqljdbc_auth.dll`.



When upgrading a connector, the `$(ARCSIGHT_HOME)\jre\bin` directory is overwritten; therefore, you will need to copy the authentication file to this folder again after update.

- 2 Go to `$(ARCSIGHT_HOME)\current\bin` and double-click `runagentsetup` to continue the SmartConnector installation.
- 3 When entering the connector parameters, in the **JDBC Database URL** field, append `;integratedSecurity=true` to the end of the URL string.

The following is an example; note that the name or instance of the database configured at installation/audit time should be used.

```
jdbc:sqlserver://mysqlserver:1433;DatabaseName=mydatabase;integratedSecurity=true
```

- 4 Complete the remaining connector wizard configuration steps.
- 5 After completing the connector installation, if running on a Windows Server, change the service account to use the Windows account that should login to the database. The Connector will use the account used to start the service, regardless of the account value setting entered in the connector setup process.

## Install the SmartConnector

The following sections provide instructions for installing and configuring your selected SmartConnector.

ArcSight recommends you do not install database connectors on the database server or any mission critical servers as this could cause performance issues.

## Prepare to Install Connector

Before you install any SmartConnectors, make sure that the ArcSight products with which the connectors will communicate have already been installed correctly (such as ArcSight ESM or ArcSight Logger).

For complete product information, read the *Administrator's Guide* as well as the *Installation and Configuration* guide for your ArcSight product before installing a new SmartConnector. If you are adding a connector to the ArcSight Management Center, see the *ArcSight Management Center Administrator's Guide* for instructions, and start the installation procedure at "Set Global Parameters (optional)" or "Select Connector and Add Parameter Information."

Before installing the SmartConnector, be sure the following are available:

- Local access to the machine where the SmartConnector is to be installed
- Administrator passwords

## Install Core Software

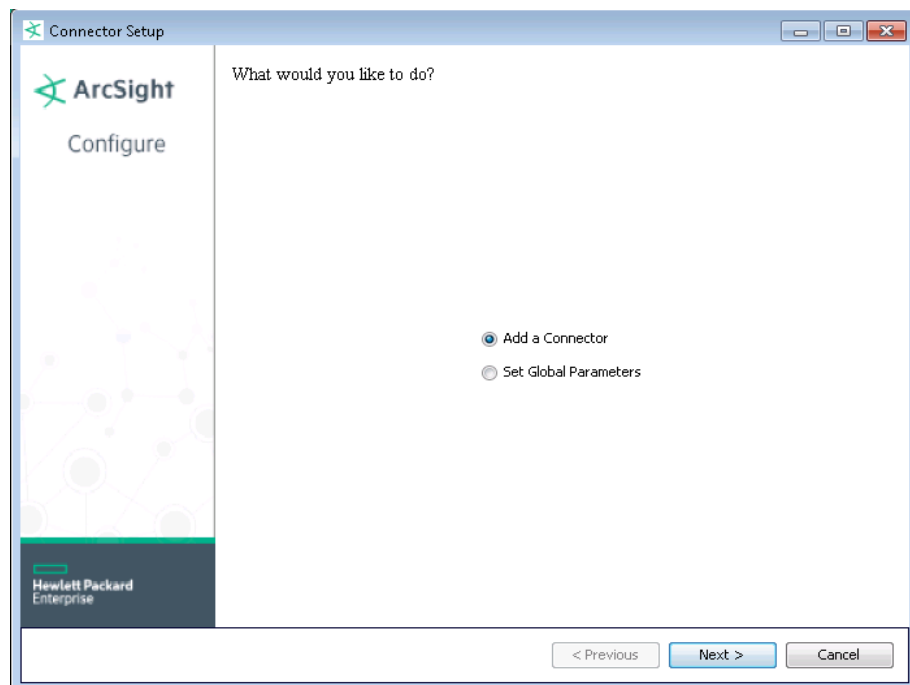
Unless specified otherwise at the beginning of this guide, this SmartConnector can be installed on all ArcSight supported platforms; for the complete list, see the *SmartConnector Product and Platform Support* document, available from the HPE SSO and Protect 724 sites.

- 1 Download the SmartConnector executable for your operating system from the HPE SSO site.
- 2 Start the SmartConnector installation and configuration wizard by running the executable.

Follow the wizard through the following folder selection tasks and installation of the core connector software:

Introduction  
Choose Install Folder  
Choose Shortcut Folder  
Pre-Installation Summary  
Installing...

- 3 When the installation of SmartConnector core component software is finished, the following window is displayed:



## Download SQL Server JDBC Driver

To download a Microsoft SQL Server JDBC driver, click **Cancel** to leave the configuration wizard at this point and copy the jar file you downloaded earlier (see "Download and Install a JDBC Driver") to `$ARCSIGHT_HOME/current/user/agent/lib`.

From `$ARCSIGHT_HOME/current/bin`, double-click `runagentsetup` to return to the SmartConnector Configuration Wizard.

## Set Global Parameters (optional)

If you choose to perform any of the operations shown in the following table, do so before adding your connector. You can set the following parameters:

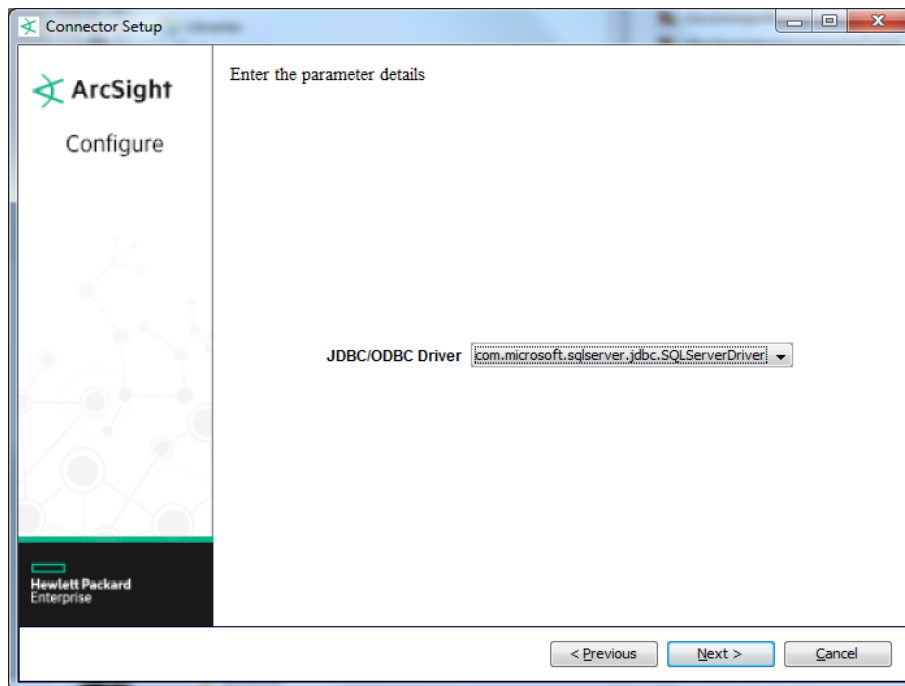
Global Parameter	Setting
Set FIPS mode	Set to 'Enable' to enable FIPS compliant mode. To enable FIPS Suite B Mode, see the SmartConnector User Guide under "Modifying Connector Parameters" for instructions. Initially, this value is set to 'Disable'.
Set Remote Management	Set to 'Enable' to enable remote management from ArcSight Management Center. When queried by the remote management device, the values you specify here for enabling remote management and the port number will be used. Initially, this value is set to 'Disable'.
Remote management listener port	The remote management device will listen to the port specified in this field. The default port number is 9001.
Preferred IP Version	If both IPv4 and IPv6 IP addresses are available for the local host (the machine on which the connector is installed), you can choose which version is preferred. Otherwise, you will see only one selection. When both values are present, the initial setting is IPv4.

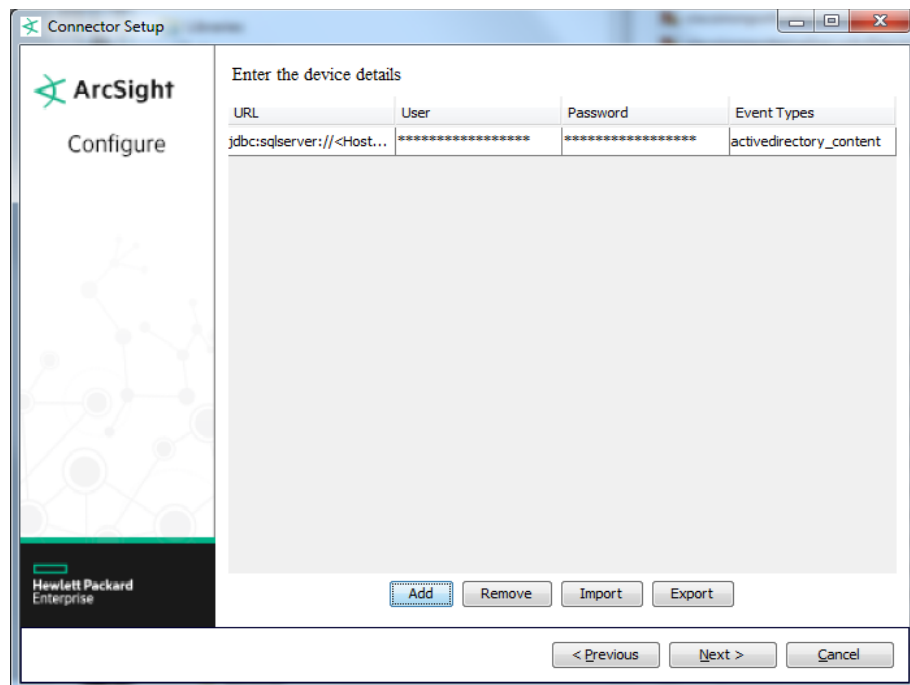


After making your selections, click **Next**. A summary screen is displayed. Review the summary of your selections and click **Next**. Click **Continue** to return to the "Add a Connector" window. Continue the installation procedure with "Select Connector and Add Parameter Information."

## Select Connector and Add Parameter Information

- 1 Select **Add a Connector** and click **Next**. If applicable, you can enable FIPS mode and enable remote management later in the wizard after SmartConnector configuration.
- 2 Select **Dell ChangeAuditor DB** and click **Next**.
- 3 Enter the required SmartConnector parameters to configure the SmartConnector, then click **Next**.





Parameter	Description
JDBC/ODBC Driver	Select the 'com.microsoft.sqlserver.jdbc.SQLServerDriver' driver.
URL	The following default value is shown for JDBC drivers: 'jdbc:sqlserver://<MS SQL Server Host Name or IP Address>:1433;DatabaseName=<MS SQL Server Database Name>'. Substitute actual values for <MS SQL Server Host Name or IP Address> and <MS SQL Server Database Name>.
User	Enter the login name of the user you created on the DB machine in "Create a New Database User for Microsoft SQL Server."
Password	Enter the password assigned to the DB SQL Server user.
Event Types	Default is "activedirectory_content".

You can click the 'Export' button to export the host name data you have entered into the table into a CSV file; you can click the 'Import' button to select a CSV file to import into the table rather than add the data manually. See the "SmartConnector User's Guide" for more information.

## Select a Destination

- 1 The next window asks for the destination type; select a destination and click **Next**. For information about the destinations listed, see the *ArcSight SmartConnector User Guide*.
- 2 Enter values for the destination. For the ArcSight Manager destination, the values you enter for **User** and **Password** should be the same ArcSight user name and password you created during the ArcSight Manager installation. Click **Next**.
- 3 Enter a name for the SmartConnector and provide other information identifying the connector's use in your environment. Click **Next**. The connector starts the registration process.

- 4 If you have selected ArcSight Manager as the destination, the certificate import window for the ArcSight Manager is displayed. Select **Import the certificate to the connector from destination** and click **Next**. (If you select **Do not import the certificate to connector from destination**, the connector installation will end.) The certificate is imported and the **Add connector Summary** window is displayed.

## Complete Installation and Configuration

- 1 Review the **Add Connector Summary** and click **Next**. If the summary is incorrect, click **Previous** to make changes.
- 2 The wizard now prompts you to choose whether you want to run the SmartConnector as a stand-alone process or as a service. If you choose to run the connector as a stand-alone process, select **Leave as a standalone application**, click **Next**, and continue with step 5.
- 3 If you chose to run the connector as a service, with **Install as a service** selected, click **Next**. The wizard prompts you to define service parameters. Enter values for **Service Internal Name** and **Service Display Name** and select **Yes** or **No** for **Start the service automatically**. The **Install Service Summary** window is displayed when you click **Next**.
- 4 Click **Next** on the summary window.
- 5 To complete the installation, choose **Exit** and Click **Next**.

For instructions about upgrading the connector or modifying parameters, see the *SmartConnector User Guide*.



When using Windows authentication, after completing the connector installation, if running on a Windows Server, change the service account to use the Windows account that should log in to the database. The connector will use the account used to start the service, regardless of the account value setting entered in the connector setup process.

## Run the SmartConnector

SmartConnectors can be installed and run in stand-alone mode, on Windows platforms as a Windows service, or on UNIX platforms as a UNIX daemon, depending upon the platform supported. On Windows platforms, SmartConnectors also can be run using shortcuts and optional Start menu entries.

If the connector is installed in stand-alone mode, it must be started manually and is not automatically active when a host is restarted. If installed as a service or daemon, the connector runs automatically when the host is restarted. For information about connectors running as services or daemons, see the *ArcSight SmartConnector User Guide*.

To run all SmartConnectors installed in stand-alone mode on a particular host, open a command window, go to `$ARCSIGHT_HOME\current\bin` and run: `arcsight connectors`

To view the SmartConnector log, read the file `$ARCSIGHT_HOME\current\logs\agent.log`; to stop all SmartConnectors, enter `Ctrl+C` in the command window.

## Device Event Mapping to ArcSight Fields

The following section lists the mappings of ArcSight data fields to the device's specific event definitions. See the *ArcSight Console User's Guide* for more information about the ArcSight data fields.

### Dell ChangeAuditor Event Mappings to ArcSight ESM Fields

ArcSight ESM Field	Device-Specific Field
Agent (Connector) Severity	high=High,Checker,Red, medium=Medium,Yellow, low=None,Low,Green,Blue,Local
Destination Address	UserAddressIPv4
Destination FQDN	ServerFQDN
Destination Host Name	One of(EventMessage,ServerName)
Destination NT Domain	EventMessage
Destination Process Name	ProcessName
Device Action	ActionName
Device Custom Date1	TimeBatched
Device Custom IPv6 Address 3	UserAddressIPv6 (Device Custom IPv6 Address3)
Device Custom Number 1	TimeOfDay (Time of Day)
Device Custom String 2	InitiatorUserName (Initiator User Name)
Device Custom String 3	UserMail (Email Address)
Device Custom String 4	ObjectName (Object Name)
Device Custom String 5	ObjectClass (Object Class)
Device Custom String 6	ObjectCanonical (Object Canonical)
Device Event Class ID	EventClassID
Device Facility	FacilityName
Device Product	'Change Auditor for Active Directory'
Device Receipt Time	TimeReceived
Device Severity	SeverityName
Device Vendor	'Dell'
End Time	TimeDetected
Event Outcome	ResultName
External ID	EventID
File Hash	fileHash
File Name	fileName
File Path	filePath
Name	EventClassName
Source Address	SourceAddress
Source FQDN	DomainFQDN
Source Host Name	UserAddress
Source NT Domain	DomainName
Source Process Name	EventSource
Source Service Name	ServiceName
Source User Name	One of (UserName, UserAccount)

## Troubleshooting

### "What do I do when the connector can't reconnect to the MS SQL Server database?"

In some cases, connectors using MS SQL Server databases are unable to reconnect to the database after losing and reacquiring network connection. Restarting the connector will resolve this problem.

### "How do I deploy SQL Server Native Client?"

When deploying an application that is dependent on SQL Server Native Client, you will need to redistribute SQL Server Native Client with your application. Unlike Microsoft Data Access Components (MDAC), which is now a component of the operating system, SQL Server Native Client is a component of SQL Server. Therefore, it is important to install SQL Server Native Client in your development environment and redistribute SQL Server Native Client with your application.

The SQL Server Native Client redistributable installation program, named sqlncli.msi, is available on the SQL Server installation media and is available as one of the SQL Server Feature Pack components on the Microsoft Download site. For more information about deploying SQL Server Native Client with your application, see "Deploying Applications with SQL Server Native Client" available from Microsoft.

### "Why does my connection to SQL Server fail/hang?"

Oracle has released Java 6 update 30 (6u30) that behaves differently from JRE 6u29, causing possible database connection problems for SQL Server database connectors using JDBC connection. These connection problems can occur with JRE 1.6.0\_29 (6u29) and later versions.

Microsoft recommends using JRE 6u30 (and above) instead of JRE 6u29. Apply the "SQL Server 2008 R2 Service Pack 1 Cumulative Update 6" patch to the SQL server if you are experiencing connection failures or hangs.

### "Why am I receiving the message 'Login failed for user 'sqluser'. The user is not associated with a trusted SQL Server connection.'"

Only Microsoft JDBC driver v4 or later support integrated authentication. The driver also does not provide function to supply Windows authentication credentials such as user name and password. In such cases, the applications must use SQL Server Authentication. When installing the connector on a non-Windows platform, configure the Microsoft SQL Server for Mixed Mode Authentication or SQL Server Authentication.

### "How can I keep the connector from becoming clogged with events after being shut down for awhile?"

If the connector is shut down for some time on an active database, a lot of events can accumulate that can clog the connector on restart. The `preservestate` parameter can be used to avoid this situation. This parameter is enabled (true) by default. Setting `preservestate` to disabled (false) in the `agent.properties` file allows the connector to skip the old events and start from real time. The `agent.properties` file is located in the `$ARCSIGHT_HOME\current\user\agent` folder. Restart the connector for your change to take effect.

### "What do I do when I receive "Connector parameters did not pass the verification with error ..." message?"

You may not have the correct version of jar file. When you download the JDBC driver, the version of the jar file depends on the version of JRE the Connector uses. Versions 7.1.2 and later use JRE 1.7 and require sqljdbc41.jar. Prior versions of the connector that run JRE 1.6 require sqljdbc4.jar.