

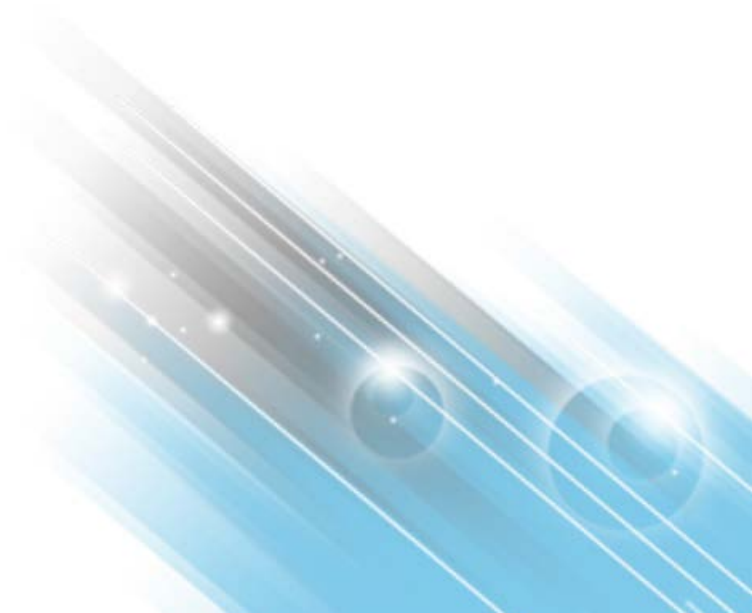


Release Notes

HP ArcSight SmartConnector Load Balancer

Version 1.0.0.1073.0

August 28, 2015



Release Notes

HP ArcSight SmartConnector Load Balancer

Version 1.0.0.1073.0

August 28, 2015

Copyright © 2015 Hewlett-Packard Development Company, L.P. Confidential computer software. Valid license from HP required for possession, use or copying. Consistent with FAR 12.211 and 12.212, Commercial Computer Software, Computer Software Documentation, and Technical Data for Commercial Items are licensed to the U.S. Government under vendor's standard commercial license.

The information contained herein is subject to change without notice. The only warranties for HP products and services are set forth in the express warranty statements accompanying such products and services. Nothing herein should be construed as constituting an additional warranty. HP shall not be liable for technical or editorial errors or omissions contained herein. Follow this link to see a complete statement of ArcSight's copyrights, trademarks and acknowledgements:

<http://www.hpenterprisesecurity.com/copyright>.

This document is confidential.

Contents

HP ArcSight SmartConnector Load Balancer Release 1.0.1073	1
To Apply This Release.....	1
About SmartConnector Load Balancer	1
General Requirements.....	1
Hardware Requirements.....	1
Software or Platform Requirements.....	1
SmartConnector Requirements	1
Load Balancer Features.....	1

HP ArcSight SmartConnector Load Balancer Release 1.0.1073

This is the first release of HP ArcSight SmartConnector Load Balancer.

These notes apply to this release of HP ArcSight SmartConnector Load Balancer, as well as providing other information about supported versions and platforms.

To Apply This Release

Download the appropriate executable for your platform from the Support Web site (<https://softwaresupport.hp.com/>), as well as the PDF file for the *HP ArcSight SmartConnector Load Balancer Configuration Guide*. When downloading the documentation zip file, create a folder for the documentation (such as `C:\ArcSight\Docs`) and unzip the file there.

For a successful Load Balancer installation, follow the installation procedures documented in the HP ArcSight SmartConnector Load Balancer Configuration Guide.

About SmartConnector Load Balancer

HP ArcSight SmartConnector Load Balancer provides a “SmartConnector-smart” load balancing mechanism by monitoring the status and load of SmartConnectors. Currently it supports two types of event sources and SmartConnectors. One distributes the syslog input stream to syslog connectors using TCP or UDP and the other downloads files from a remote server and distributes them to the file-based connectors.

NOTE: File-based load balancing is a beta feature for this release.

General Requirements

Minimum Hardware Requirements

- CPU: 2 CPU X 4 Cores each (2 x Intel E5620, quad core, 2.4 Ghz or better)
- RAM: 16 GB
- Disk: 60 GB
- Number of network interfaces—1 Dedicated Gig Ethernet interface

Software or Platform Requirements

- RHEL 6.6 and 7.0 (64-bit only)
- CentOS 6.6 and 7.0 (64-bit only)

SmartConnector Requirements

- HP ArcSight SmartConnector release 7.1.4.7445 or later
- Syslog daemon and/or file-based SmartConnectors

Load Balancer Features

Load Balancer supports the following:

- Standalone mode using a single application server
- High availability (HA) mode, which can be configured with two hosts
- Syslog type of input stream or batch files on FTP server

Confidential

- Syslog-based and file-based (beta) SmartConnectors as destinations
- TCP and UDP protocol for syslog-type input or connectors
- Three routing policies — round robin, weighted round robin, and aggregation preferred
- Event batching (TCP only) for better aggregation at the destination connector and better network throughput
- Email notification for up/down status on member hosts and destination connectors
- Load and health monitoring of SmartConnector destinations
- Load Balancer running as a service