



Hewlett Packard
Enterprise

HPE Security ArcSight Connectors

SmartConnector for Oracle Audit Vault DB

Configuration Guide

November 30, 2016

Configuration Guide

SmartConnector for Oracle Audit Vault DB

November 30, 2016

Copyright © 2010 – 2016 Hewlett Packard Enterprise Development LP

Warranty

The only warranties for Hewlett Packard Enterprise products and services are set forth in the express warranty statements accompanying such products and services. Nothing herein should be construed as constituting an additional warranty. Hewlett Packard Enterprise Development LP shall not be liable for technical or editorial omissions contained herein. The information contained herein is subject to change without notice. The network information used in the examples in this document (including IP addresses and hostnames) is for illustration purposes only. Hewlett Packard Enterprise Development LP products are highly flexible and function as you configure them. The accessibility, integrity, and confidentiality of your data is your responsibility. Implement a comprehensive security strategy and follow good security practices. This document is confidential.

Restricted Rights Legend

Confidential computer software. Valid license from Hewlett Packard Enterprise Development LP required for possession, use or copying. Consistent with FAR 12.211 and 12.212, Commercial Computer Software, Computer Software Documentation, and Technical data for Commercial Items are licensed to the U.S. Government under vendor's standard commercial license.

Follow this link to see a complete statement of Hewlett Packard Enterprise Development LP copyrights, trademarks and acknowledgements:

<https://www.protect724.hpe.com/docs/DOC-13026>.

Revision History

Date	Description
11/30/2016	Updated installation procedure for setting preferred IP address mode.
03/31/2015	Changed ArcSight field mapping from "Event Name" to "Name".
06/28/2013	Added support for v10.3.0.
11/15/2012	Removed section "Enable FIPS Mode" as Oracle driver does not support FIPS-enabled mode.
05/15/2012	Added new installation procedure.

SmartConnector for Oracle Audit Vault DB

This guide provides information for installing the SmartConnector for Oracle Audit Vault DB and configuring the device for event collection. Oracle Audit Vault versions 10.2 and 10.3 are supported.

Product Overview

Oracle Audit Vault is an enterprise-wide audit solution that consolidates, detects, monitors, alerts, and reports on audit data for security auditing and compliance. Oracle Audit Vault consolidates audit data and critical events into a centralized and secure audit warehouse.

Configuration

For complete information about Oracle Audit Vault, see the *Oracle Audit Vault Administrator's Guide* and the *Oracle Audit Vault Auditor's Guide*. The *Oracle Audit Vault Auditor's Guide* explains how Oracle Audit Vault auditors can use the Audit Vault Console to audit data in Oracle and Microsoft SQL Server databases. The *Oracle Audit Vault Administrator's Guide* provides usage information for Audit Vault administrators who perform administrative tasks on an Audit Vault system.

Oracle 8i: Connector Upgrade

With the addition of Oracle 11g support, ArcSight replaced the 10.2.0.1 oracle-jdbc driver in `$ARCSIGHT_HOME\current\lib\agent` with the oracle-jdbc-11.1.0.6.jar. This driver no longer connects to Oracle 8i databases; therefore, before upgrading the connector:

- 1 Go to `$ARCSIGHT_HOME\Current\lib\agent` and locate the oracle-jdbc-10.2.0.1.jar file. Copy it to a temporary location.
- 2 After completing connector upgrade and before running the connector, replace the 11.1.0.6.jar file with the 10.2.0.1.jar file.

Install the SmartConnector

The following sections provide instructions for installing and configuring your selected SmartConnector.

Prepare to Install Connector

Before you install any SmartConnectors, make sure that the ArcSight products with which the connectors will communicate have already been installed correctly (such as ArcSight ESM or ArcSight Logger). This configuration guide takes you through the installation process with **ArcSight Manager (encrypted)** as the destination.

For complete product information, read the *Administrator's Guide* as well as the *Installation and Configuration* guide for your ArcSight product before installing a new SmartConnector. If you are adding a connector to the ArcSight Management Center, see the *ArcSight Management Center Administrator's Guide* for instructions, and start the installation procedure at "Set Global Parameters (optional)" or "Select Connector and Add Parameter Information."

Before installing the SmartConnector, be sure the following are available:

- Local access to the machine where the SmartConnector is to be installed
- Administrator passwords

Install Core Software

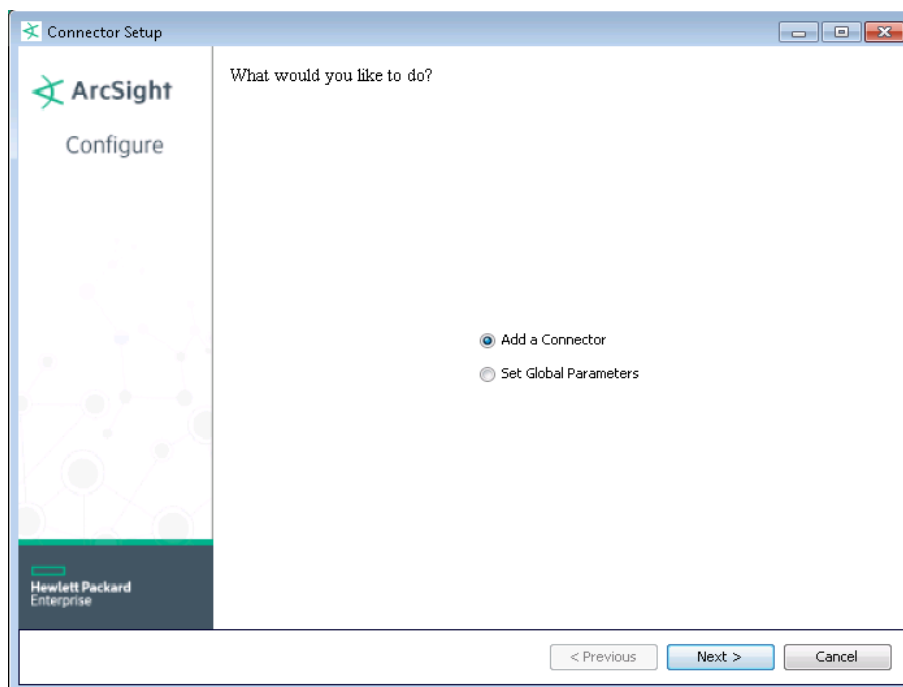
Unless specified otherwise at the beginning of this guide, this SmartConnector can be installed on all ArcSight supported platforms; for the complete list, see the *SmartConnector Product and Platform Support* document, available from the HPE SSO and Protect 724 sites.

- 1 Download the SmartConnector executable for your operating system from the HPE SSO site.
- 2 Start the SmartConnector installation and configuration wizard by running the executable.

Follow the wizard through the following folder selection tasks and installation of the core connector software:

Introduction
Choose Install Folder
Choose Shortcut Folder
Pre-Installation Summary
Installing...

- 3 When the installation of SmartConnector core component software is finished, the following window is displayed:



Set Global Parameters (optional)

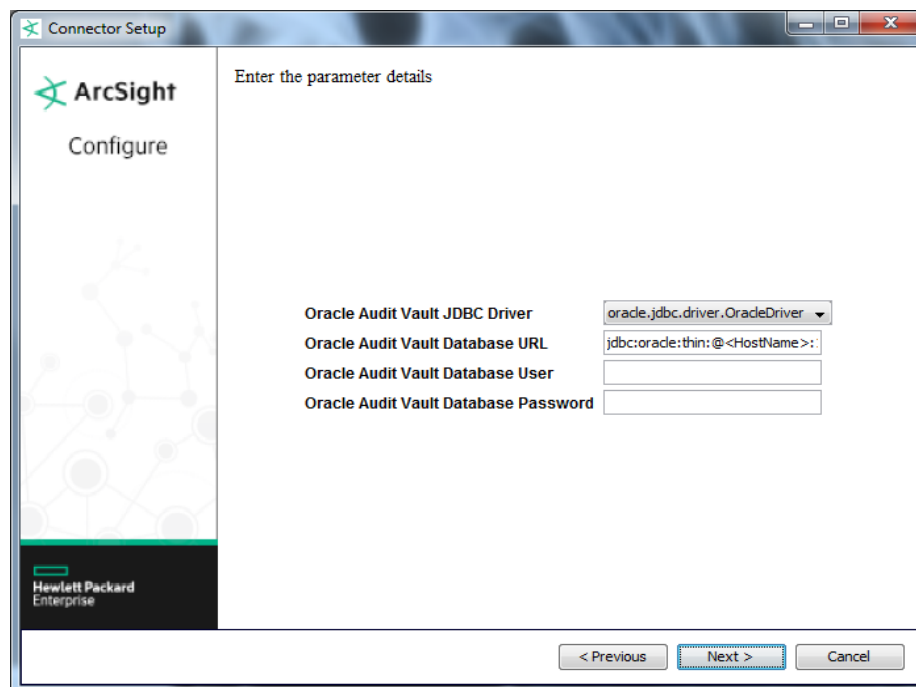
If you choose to perform any of the operations shown in the following table, do so before adding your connector. After installing core software, you can set the following parameters:

Global Parameter	Setting
Set FIPS mode	Set to 'Enable' to enable FIPS compliant mode. To enable FIPS Suite B Mode, see the SmartConnector User Guide under "Modifying Connector Parameters" for instructions. Initially, this value is set to 'Disable'.
Set Remote Management	Set to 'Enable' to enable remote management from ArcSight Management Center. When queried by the remote management device, the values you specify here for enabling remote management and the port number will be used. Initially, this value is set to 'Disable'.
Remote management listener port	The remote management device will listen to the port specified in this field. The default port number is 9001.
Preferred IP Version	If both IPv4 and IPv6 IP addresses are available for the local host (the machine on which the connector is installed), you can choose which version is preferred. Otherwise, you will see only one selection. When both values are present, the initial setting is IPv4.

After making your selections, click **Next**. A summary screen is displayed. Review the summary of your selections and click **Next**. Click **Continue** to return to the "Add a Connector" window. Continue the installation procedure with "Select Connector and Add Parameter Information."

Select Connector and Add Parameter Information

- 1 Select **Add a Connector** and click **Next**. If applicable, you can enable FIPS mode and enable remote management later in the wizard after SmartConnector configuration.
- 2 Select **Oracle Audit Vault DB** and click **Next**.
- 3 Enter the required SmartConnector parameters to configure the SmartConnector, then click **Next**.



Parameter	Description
Oracle Audit Vault JDBC Driver	Select a JDBC Database driver from the drop-down list or accept the default value. The default Oracle JDBC driver provided works with Oracle 8i, 10g, and 11g database versions. If you are using Oracle 8i, see "Oracle 8i: Connector Upgrade" in the Configuration section of this guide.
Oracle Audit Vault Database URL	Enter the URL for the Oracle Database instance being audited in this field (for example, 'jdbc:oracle:thin:@<hostname>:<port>:<sid>'). You can connect to a database in an RAC setup, using 'jdbc:oracle:thin:@(DESCRIPTION=(ADDRESS_LIST=(ADDRESS=(PROTOCOL=TCP)(SERVICE_NAME=DATABASE_SERVICENAME)))'. For example: 'jdbc:oracle:thin:@(DESCRIPTION= (ADDRESS LIST= (ADDRESS= (PROTOCOL=TCP)(HOST=x.x.x.x) (PORT=1521))) (CONNECT_DATA= (SERVICE_NAME=xxxx) (SERVER=DEDICATED)))'
Oracle Audit Vault Database User	Enter the name of an Oracle database user having access to the database instance.
Oracle Audit Vault Database Password	Enter the password for the Oracle Audit Vault database user.

Select a Destination

- 1 The next window asks for the destination type; make sure **ArcSight Manager (encrypted)** is selected and click **Next**. (For information about this destination or any of the other destinations listed, see the *ArcSight SmartConnector User Guide*.)

- 2 Enter values for the **Manager Host Name**, **Manager Port**, **User** and **Password** required parameters. This is the same ArcSight user name and password you created during the ArcSight Manager installation. Click **Next**.
- 3 Enter a name for the SmartConnector and provide other information identifying the connector's use in your environment. Click **Next**. The connector starts the registration process.
- 4 The certificate import window for the ArcSight Manager is displayed. Select **Import the certificate to the connector from destination** and click **Next**. (If you select **Do not import the certificate to connector from destination**, the connector installation will end.) The certificate is imported and the **Add connector Summary** window is displayed.

Complete Installation and Configuration

- 1 Review the **Add Connector Summary** and click **Next**. If the summary is incorrect, click **Previous** to make changes.
- 2 The wizard now prompts you to choose whether you want to run the SmartConnector as a stand-alone process or as a service. If you choose to run the connector as a stand-alone process, select **Leave as a standalone application**, click **Next**, and continue with step 5.
- 3 If you chose to run the connector as a service, with **Install as a service** selected, click **Next**. The wizard prompts you to define service parameters. Enter values for **Service Internal Name** and **Service Display Name** and select **Yes** or **No** for **Start the service automatically**. The **Install Service Summary** window is displayed when you click **Next**.
- 4 Click **Next** on the summary window.
- 5 To complete the installation, choose **Exit** and Click **Next**.

For some SmartConnectors, a system restart is required before the configuration settings you made take effect. If a **System Restart** window is displayed, read the information and initiate the system restart operation.



Save any work on your computer or desktop and shut down any other running applications (including the ArcSight Console, if it is running), then shut down the system.

For instructions about upgrading the connector or modifying parameters, see the *SmartConnector User Guide*.

Run the SmartConnector

SmartConnectors can be installed and run in stand-alone mode, on Windows platforms as a Windows service, or on UNIX platforms as a UNIX daemon, depending upon the platform supported. On Windows platforms, SmartConnectors also can be run using shortcuts and optional Start menu entries.

If the connector is installed in stand-alone mode, it must be started manually and is not automatically active when a host is restarted. If installed as a service or daemon, the connector runs automatically when the host is restarted. For information about connectors running as services or daemons, see the *ArcSight SmartConnector User Guide*.

To run all SmartConnectors installed in stand-alone mode on a particular host, open a command window, go to `$ARCSIGHT_HOME\current\bin` and run: `arcsight connectors`

To view the SmartConnector log, read the file `$ARCSIGHT_HOME\current\logs\agent.log`; to stop all SmartConnectors, enter `Ctrl+C` in the command window.

Device Event Mapping to ArcSight Fields

The following section lists the mappings of ArcSight data fields to the device's specific event definitions. See the *ArcSight Console User's Guide* for more information about the ArcSight data fields.

Oracle Audit Vault DB Mappings to ArcSight ESM Fields

ArcSight ESM Field	Device-Specific Field
Connector Severity	High = 2; Medium = 1
Destination Address	SOURCE_HOSTIP
Destination Host Name	SOURCE_HOST
Destination User Name	USERNAME
Device Custom Date 1	ALERTTIME
Device Custom Number 1	PROCESS#
Device Custom Number 2	EVENT_STATUS
Device Custom String 1	ALERTNAME
Device Custom String 2	SOURCE_NAME
Device Custom String 3	TARGET_OWNER
Device Custom String 4	_DB_URL
Device Custom String 5	OSUSER_NAME
Device Custom String 6	ALERTRULE
Device Event Class ID	All of (EVENT_ID, ' ', EVENT_STATUS)
Device Host Name	_DB_HOST
Device Product	'Audit Vault'
Device Receipt Time	AVTIME
Device Severity	ALERT_SEVERITY
Device Vendor	'Oracle'
External ID	ALERT_SEQUENCE
File Name	TARGET_OBJECT
Message	One of (ALERTDESC, EVENTDESC)
Name	EVENT_NAME
Source Address	CLIENT_HOSTIP
Source Host Name	CLIENT_HOST