

ZENworks Mobile Management Reporting Package

November 25, 2013

Novell®

The ZENworks Mobile Management Reporting Package is a ZENworks Reporting 5 domain, a set of predefined ad hoc views, and a set of default reports that can be used to obtain information about ZENworks Mobile Management. This package works with ZENworks Mobile Management 2.8.1 and 2.8.2.

1 Installing the ZENworks Mobile Management Reporting Package

To install the ZENworks Mobile Management Reporting Package, you first need to ensure that your environment meets the following prerequisites:

- ♦ You know the database host name/ip address, port, instance name, database name, and database credentials to access your ZENworks Mobile Management database server.
- ♦ You have installed ZENworks Reporting 5 (ZR5) on a server that can establish a network connection to the database server.
- ♦ If you want to access the dashboard and reports from your iOS or Android mobile devices, ensure that you have installed the JasperMobile application from the store and configure it to connect to your ZR5 server.

If you meet these prerequisites, you can install the ZENworks Mobile Management Reporting Package by doing the following:

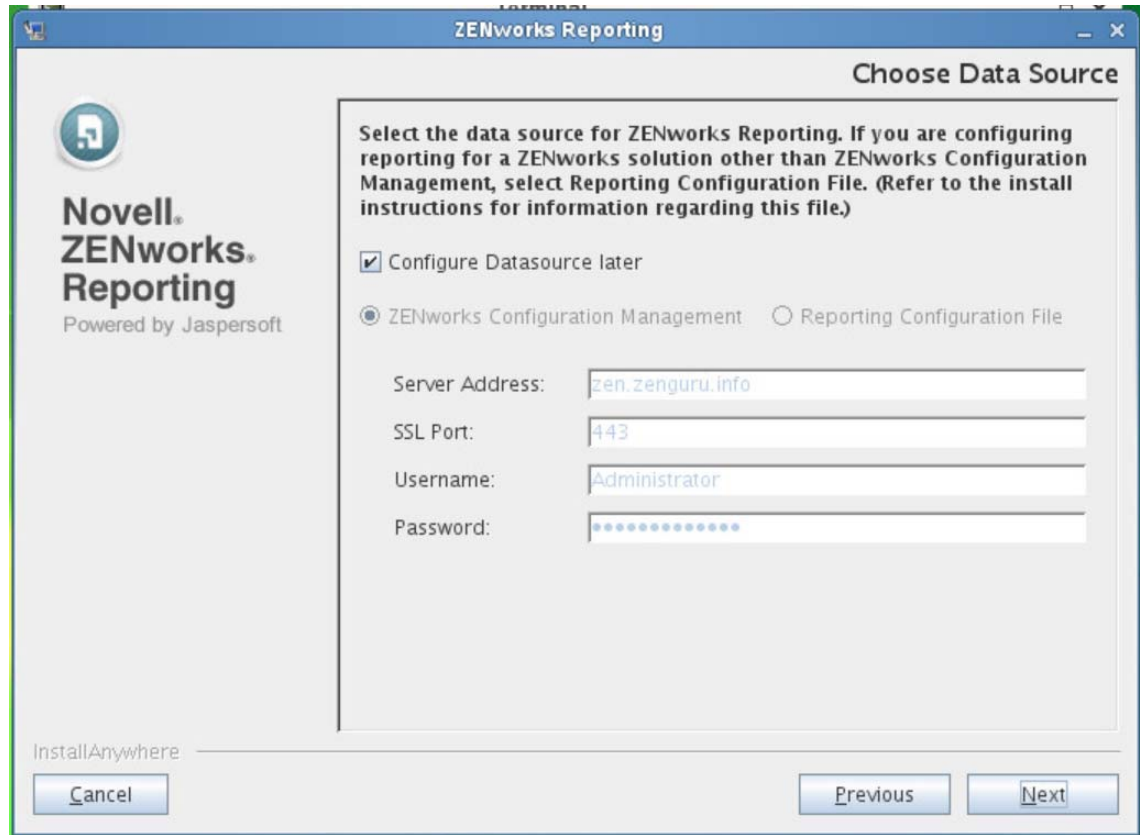
- 1 On your ZENworks Reporting server, run the ZENworks Reporting configuration tool:

```
%ZENWORKS_HOME%\zenworks-reporting\bin\zrsconfig.sh
```

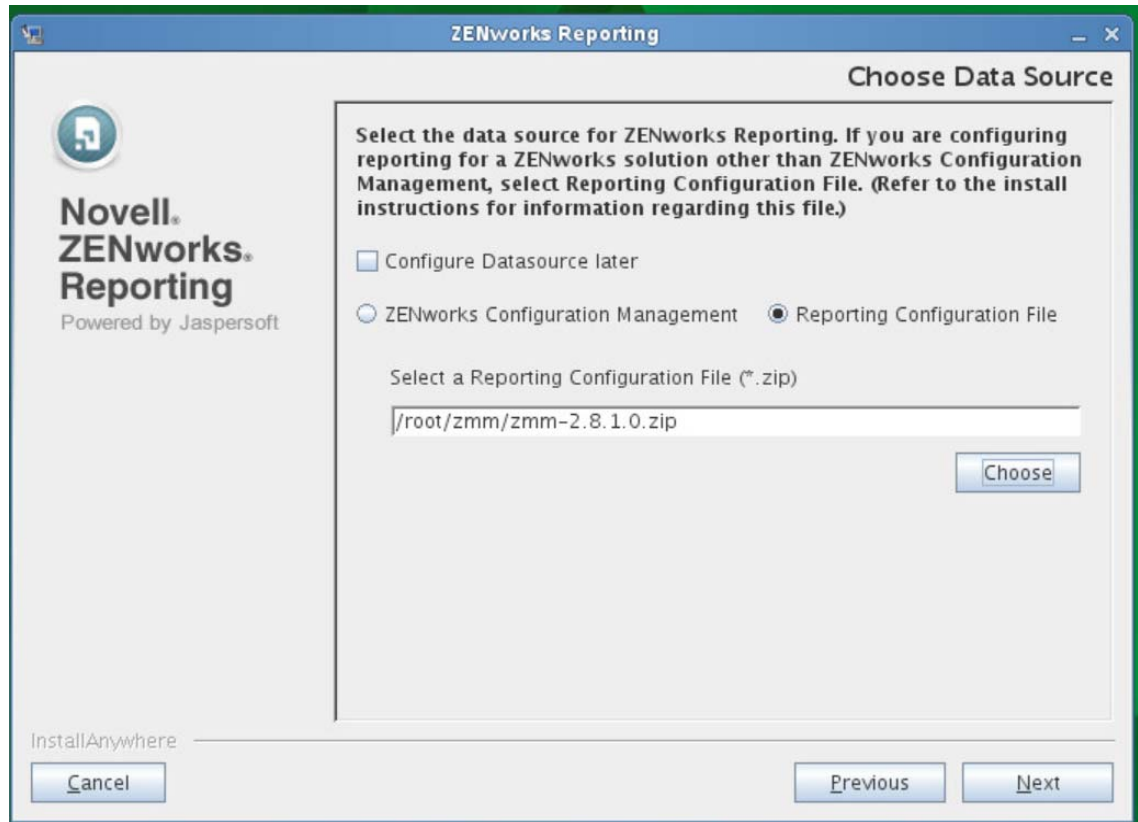
or

```
%ZENWORKS_HOME%\zenworks-reporting\bin\zrsconfig.exe
```

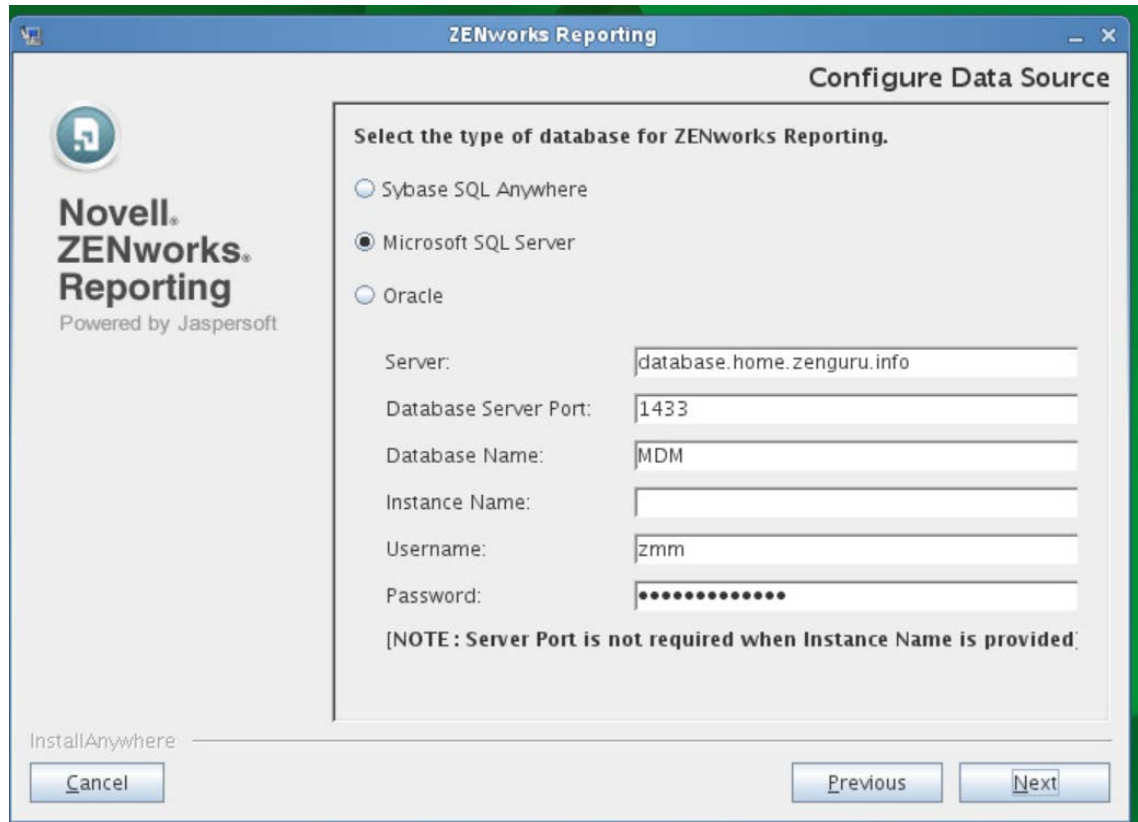
- 2 Click *Next* through all of the screens in the wizard until the Choose Data Source screen, shown below:



- 3 Deselect the *Configure Datasource later* checkbox.
- 4 Select *Reporting Configuration File*. This will ask for a path to a Reporting Configuration File as shown below:



- 5 Browse to the ZENworks Mobile Management Reporting Package zip file (zmmzrs-2.8.1.0.zip) that you download from this cool solution.
- 6 Click *Next*.
- 7 On the Configure Data Source page, enter the information to connect to the ZENworks database, similar to the dialog shown below:

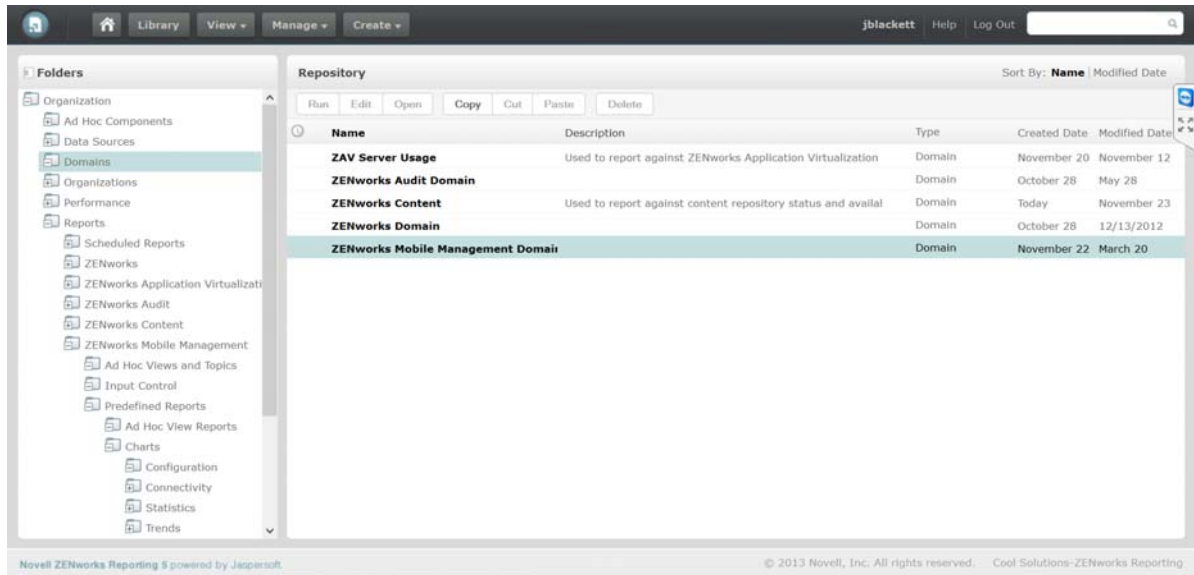


8 Click *Next*.

9 Accept the defaults for the rest of the configuration tool and complete the configuration. This creates the data source and then imports the domain, views, and reports.

2 Using the ZENworks Mobile Management Reporting Package

After the configuration script is finished running, the ZENworks Mobile Management components are present in the ZR5 server. You can see this by logging into ZR5 and looking at the Repository browser. You should see the following:



The following objects are added to the ZR5 repository:

The rest of this document looks at each of these object types in more detail so that you can properly use the capabilities of ZR5 to report against ZENworks Mobile Management data.

- ♦ Organization/Data Sources/ZAV Server Usage Data Source

This object contains the connection information for the ZR5 server to be able to connect to the ZMM database.

- ♦ Organization/Domains/ZENworks Mobile Management Domain

This object contains metadata used by the Ad Hoc reporting tool to allow you to quickly and easily build dynamic charts, crosstabs, and tabular reports.

- ♦ Organization/Reports/ZENworks Mobile Management/Predefined Reports/Adhoc View Reports

This folder contains a simple ad hoc report that shows the capabilities of the domain.

- ♦ Organization/Reports/ZENworks Mobile Management/Predefined Reports/Charts

This folder contains a number of charts that can be used on dashboards or to present compelling visual data to users. These charts were created with the iReport tool and are not editable from the Adhoc editor.

- ♦ Organization/Reports/ZENworks Application Virtualization Server/Predefined Reports/<Component> Reports

These folders contain a number of canned reports against various aspects of the product. They are generally tabular in nature. These charts were created with the iReport tool and are not editable from the Adhoc editor.

The rest of this document looks at each of these object types in more detail so that you can properly use the capabilities of ZR5 to report against ZENworks Mobile Management data. It is divided into the following topics:

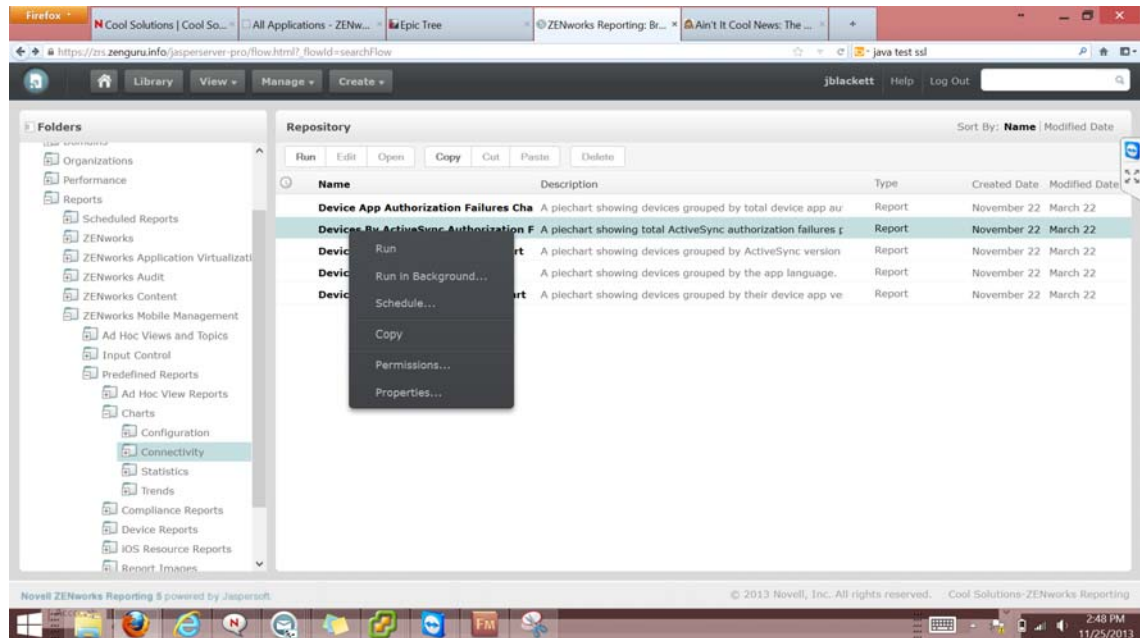
- ♦ [Section 2.1, "Running Reports included with the ZMM Reporting Package," on page 6](#)
- ♦ [Section 2.2, "Creating Custom Views using the ZENworks Mobile Management Domain," on page 9](#)

2.1 Running Reports included with the ZMM Reporting Package

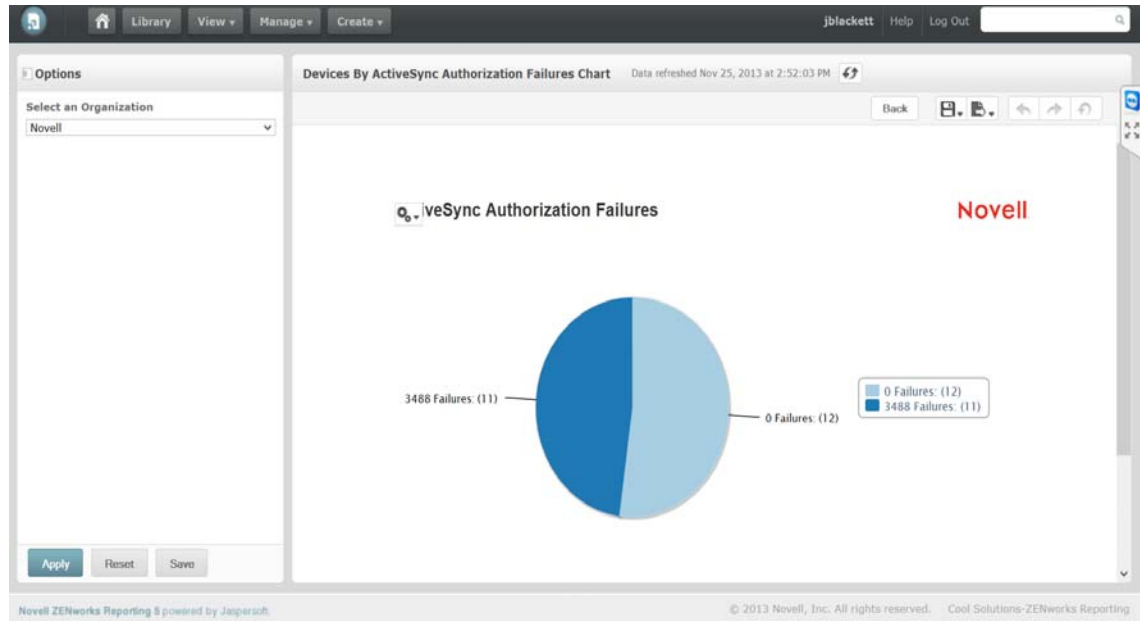
The ZENworks Mobile Management Reporting Package includes a number of predefined reports that you can view from the browser or from the JasperMobile application. To view reports from your browser do the following.

- 1 Select the *Repository View*.
- 2 Browse to *Organization > Reports > ZENworks Mobile Management > Predefined Reports > Charts OR <Component> Reports*
- 3 Right-click on of the reports, as shown below:


Select report



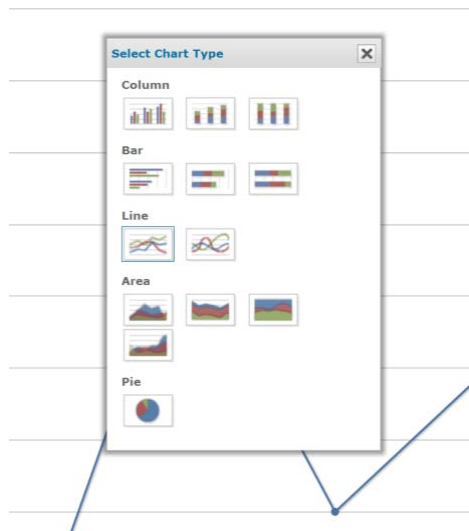
- 4 Select *Run*. This opens the Report viewer with your selected report. You should see something similar to this:



- 5 (optional) If this is a Chart report, and you want to change the chart type, click the *Chart Types*

dropdown  in the left corner of the chart. You can then select a new way to look at the data as shown below:

Select chart type

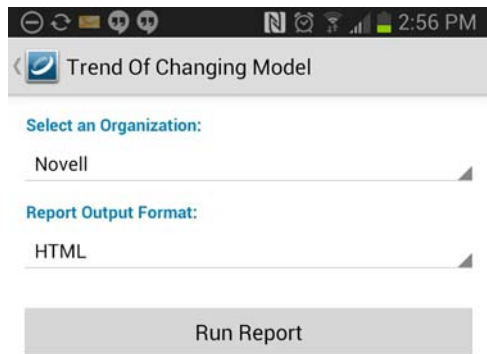


- 6 (optional) If you want to change the values for any filters, select a different Organization from the options pane.
- 7 After you have the chart and inputs the way you want, you can format the data in any tabular fields if needed. When you are finished, save the report in the system, save it to a PDF or other file format, or do both.

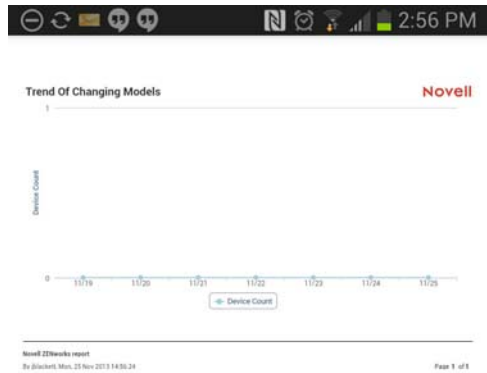
Any reports you create can also be accessed from the JasperMobile application from either the Library or the Repository browser, as described below:

- 1 Launch the JasperMobile application.
- 2 Make sure that your ZR5 server is the active profile.
- 3 Tap *Search*.
- 4 Enter the name of the report you want to run. Alternatively you may browse the repository. This displays the input filters, similar to the screen below:

JasperMobile Input Controls



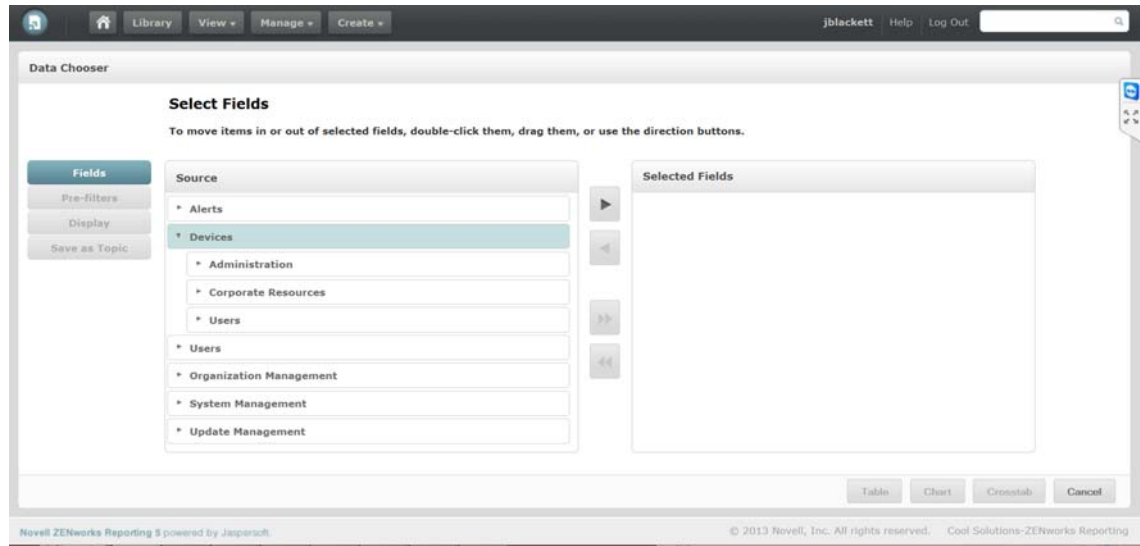
- 5 Click *Run Report* to display the report, similar to the one shown below:



2.2 Creating Custom Views using the ZENworks Mobile Management Domain

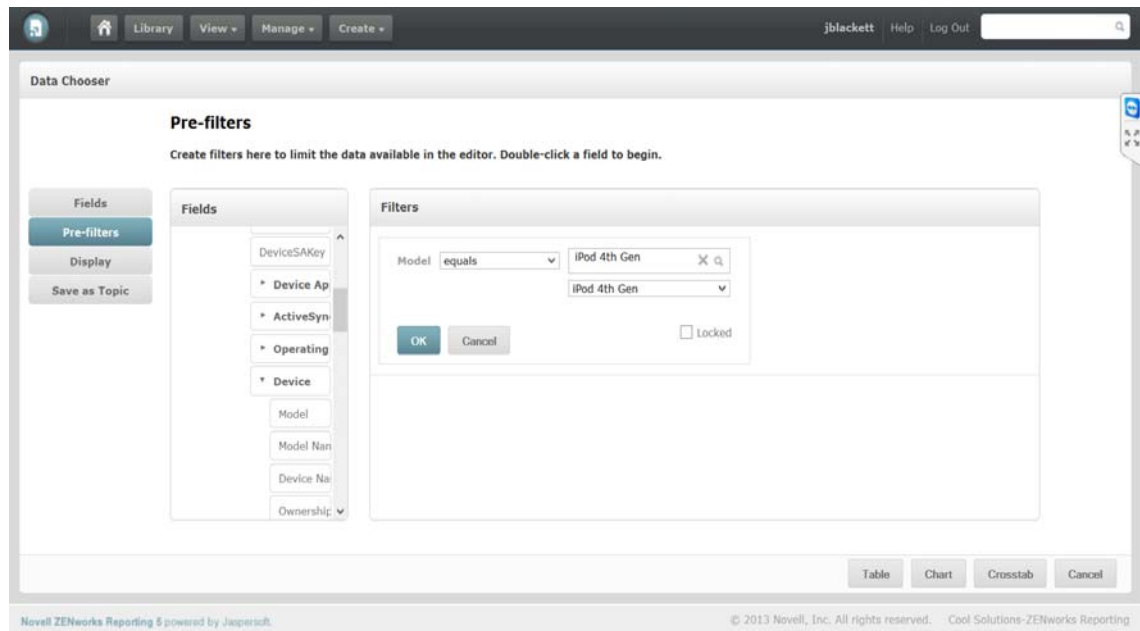
Because the ZENworks Mobile Management Reporting Package includes a full ZR5 domain for accessing the ZMM data, you can use the domain to quickly and easily build new custom views, reports, and dashboards. To build your own view using the domain, do the following:

- 1 From the ZR5 home page, click *Create Ad Hoc View*.
- 2 Select the *Domains* tab.
- 3 Highlight the *Domains > ZENworks Mobile Management Domain* entry, then click *Choose Data* to display the data chooser:



- 4 Select the fields, described in the next section, that you want to have available in your report.
- 5 (optional) If you want to add pre-filters to the query, click Pre-filters. This allows you to set filters that can be locked as part of building your view.

Set Pre-Filters



- 6 (optional) If you want to change the names of any of the fields to something more applicable for your environment, you can use the Display tab to set custom field names.
- 7 (optional) If you believe that you will use this set of fields, pre-filters, and names often, you can save this set of items as a Topic which can be re-used the next time you create a view.
- 8 Click Table, Chart, or Crosstab to open the View Designer.

- 9 Drag items from the Fields list into the report or use them as filters.
- 10 When you are finished, save the view. You can then utilize the view to create reports as described in the previous section.

For your convenience a reference document that describes all of the objects in the domain is included with this cool solution.

3 Summary

Using ZENworks Reporting 5 and the ZENworks Mobile Management Reporting Package, you can create dynamic dashboards and reports. Additionally, you can mix and match report components on dashboards with other ZMM reports or other ZENworks reports to help you get a quick view of across your environment.