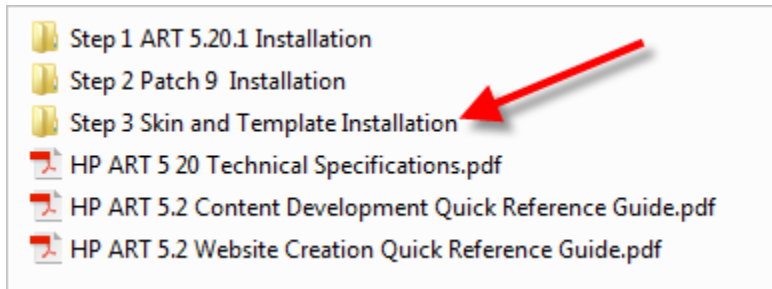


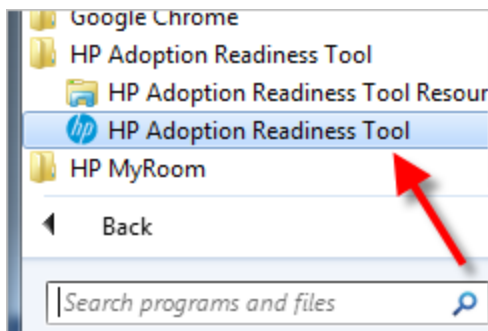
# README

## ART Skin and Template Installation

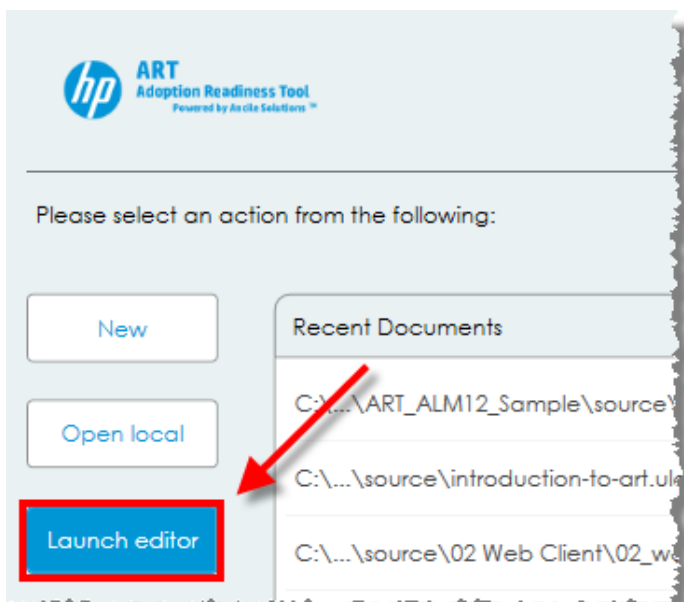
This document contains the steps necessary to install the HPE ART Skin and Template. The Skin and Template are located in the **Step 3 Skin and Template Installation** folder.



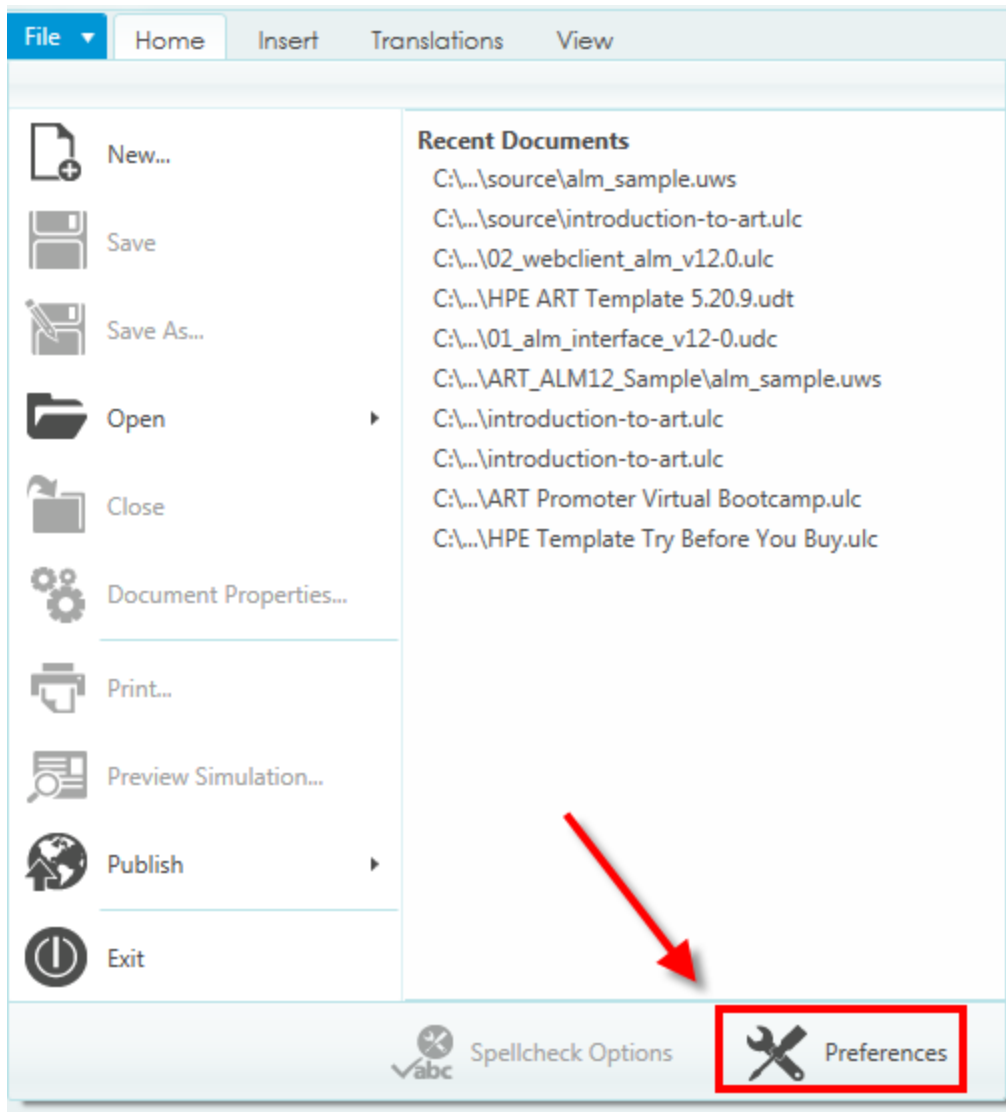
From the Windows Start Menu, select **All Programs > HP Adoption Readiness Tool**.



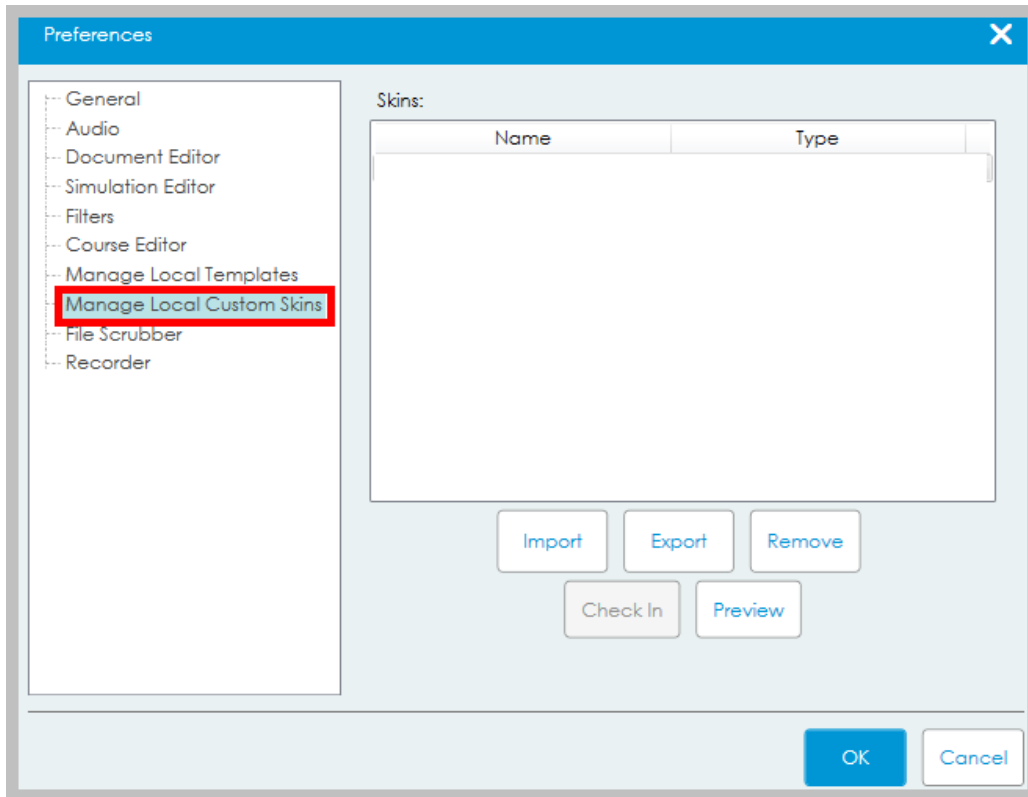
From the **Quick Start** window, select **Launch editor**.



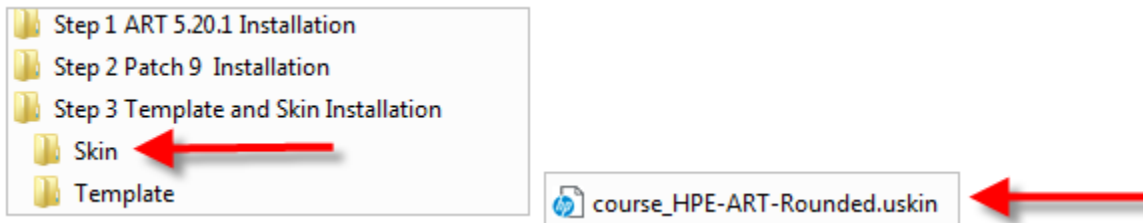
From the **File** menu, select **Preferences**.



## Select Manage Local Custom Skins

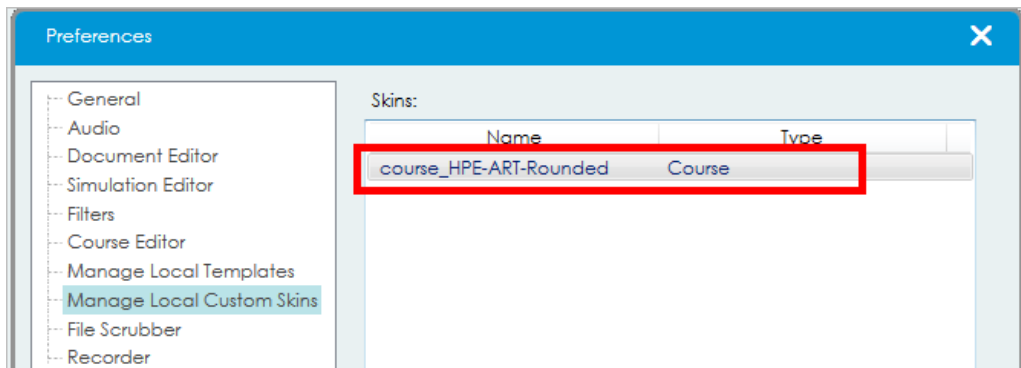


Navigate to the **Skin/course\_HPE\_ART-Rounded.uskin** file located in this package.



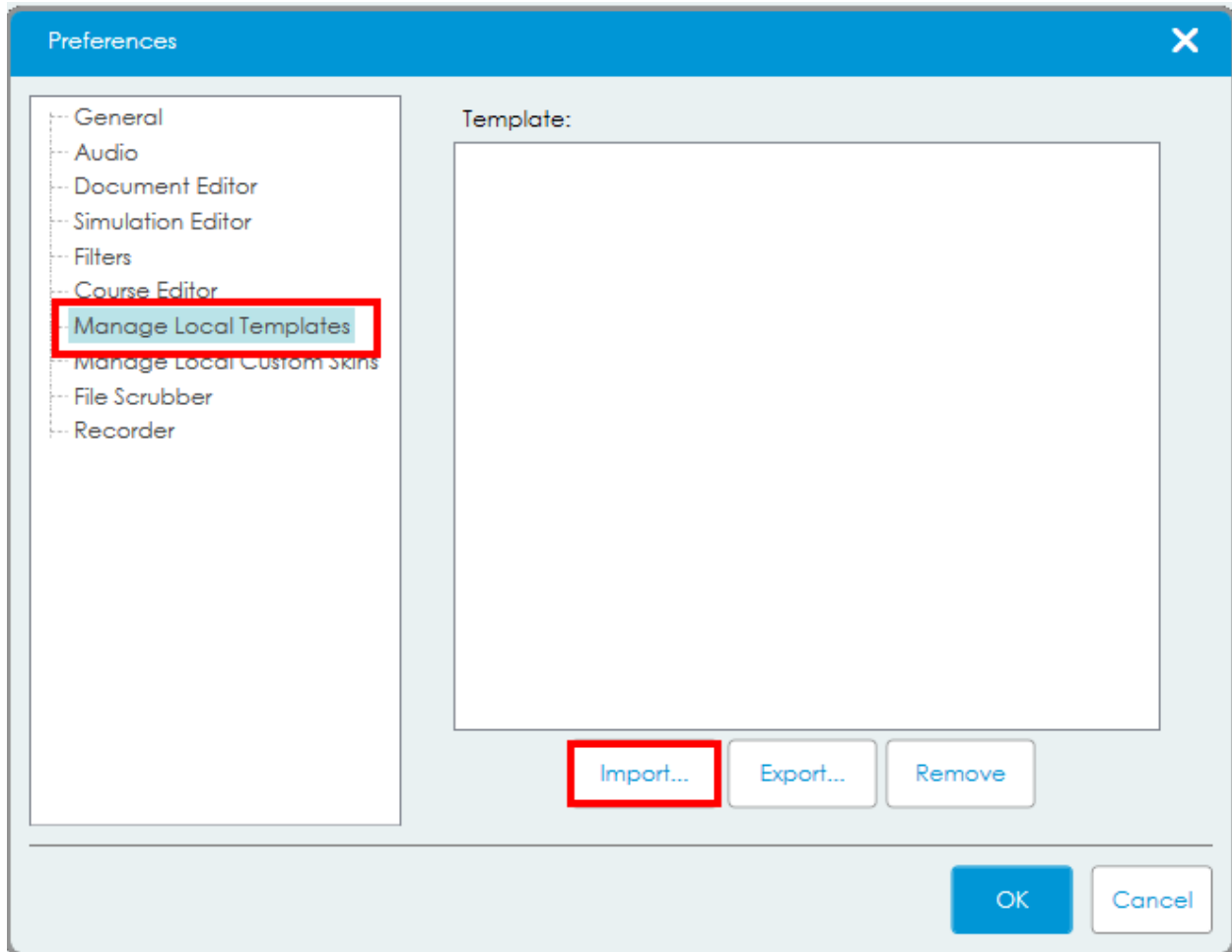
Click the **Import** button.

The skin is added.

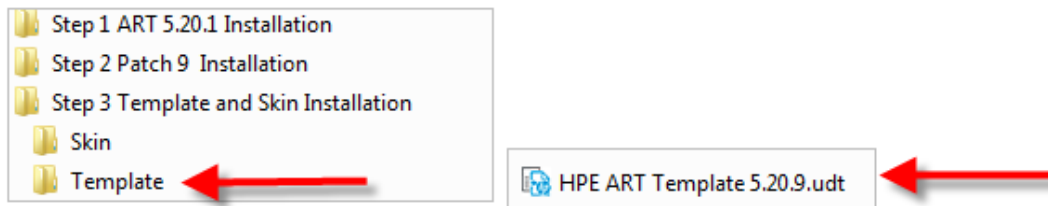


From the **Preferences** window, select **Manage Local Templates**.

Click the **Import** button.



Navigate to the **Template/HPE ART Template 5.20.9.udt** file located in this package.



The template is added.

